

**GENERAL**  
*CATALOGUE*  
**2024**

**120** anniversary  
th

**DALÍ UNIVERSE**  
*COLLECTION*

# GENERAL CATALOGUE 2024



In 2024, we invite you to leap back into the past with us, to turn back the clock 120 years to 1904, to a house located on Calle de Monturiol in Figueres where on May 11th at 8.45 pm, Salvador Dalí, The Master of Surrealism, was born- one of the most eccentric and influential artists of the 20th Century.

“I am Surrealism!” was one of Dalí’s most famous public declarations and indeed his brand of Surrealism still resonates with us today.

Surrealism, with its emphasis on unlocking the subconscious mind and exploring the realms of dreams and fantasies, provided Dalí with the perfect artistic platform.

Dalí is also known for being the creator of the “paranoiac-critical method”, an irrational method of understanding reality that, through the use of double images or invisible images, invites us to observe and perceive reality in different ways and according to multiple interpretations.

As Dalí himself said: “The fact that I myself, at the moment of painting, do not understand their meaning doesn’t imply that these paintings are meaningless: on the contrary, their meaning is so deep, complex, coherent, and involuntary that it eludes the simple analysis of logical intuition”.

Dalí is certainly one of the most controversial, and at the same time interesting, personalities in all of art history for the peculiarity of being a multifaceted man. He defined himself as: “I am the most paradoxical, most eccentric, and most concentric person in the world”.

Painter, draftsman, sculptor, poet, writer, filmmaker, creator of costumes for the stage, designer of furniture, provocateur... are just some facets of a man who made his life a true work of art.

With his trademark waxed mustache, flamboyant attire, and theatrical mannerisms, he cultivated an image of himself as a living work of art.

His eccentric behavior, which included staging elaborate publicity stunts and making outlandish statements, only served to enhance his mystique and cement his status as a cultural icon.

Beyond his artworks, Dalí’s persona was as captivating as his art.

Dalí didn’t confine himself to being just an artist and for many, he’s a true genius of Surrealism.

The multifaceted aspect of his personality continues to surprise us, make us reflect, and inspire us even 120 years after his birth.

Perhaps Salvador Dalí’s peculiarity lay precisely in his attitudes, his words proclaimed to the crowd, and his public demonstrations with behaviors bordering on madness. When asked, “Where is the border between genius and madness?” he responds:

*“This great problem has never been solved.*

*The most celebrated psychopathologists don’t know where the madness begins and genius ends.*

*My own case is even more difficult.*

*I’m not only an agent provocateur, I’m also an agent simulateur.*

*I never know when I start simulating, and when I’m telling the truth.*

*This is characteristic of my deep essence”.*

The immense artistic production he left behind tells, through various means of communication that Dalí used in his life, about his incredible inner universe, his phobias, and obsessions, the struggle against familiar and social thoughts, and his desire to provoke and actively involve us in his art.

His paintings and sculptures often depicted bizarre and dreamlike scenes populated by melting clocks, elongated figures, and enigmatic symbols, all rendered with meticulous detail. On many occasions, Salvador Dalí stated:

*“My work is a reflection, one of the innumerable reflections of what I accomplish, write, think”.*

It is precisely this multifaceted aspect of Salvador Dalí that the Dalí Universe has committed to bringing to light and continues to promote daily through the presentation of his Collection exhibited in museums and art galleries around the world.

Alongside Dalí as a painter whom everyone knows thanks to his masterpieces, foremost among them “The Persistence of Memory”, where the image of the melting clock first appears, the heart of the collection at the Museum of Modern Art (MoMA) in New York since 1934, Dalí Universe sheds light on Dalí the Creator, Dalí the Illustrator, and Dalí the Sculptor.

The Dalí Universe Collection is living proof of how Salvador Dalí had an infinite imagination that he wanted to express through art and the use of different materials and means of communication.

They demonstrate how his “surrealist ideas” are still studied, admired, and visited through countless art exhibitions dedicated to an artist-genius, the genius of Surrealism.



# SMALL SCULPTURES

Dal' created these exciting sculptures to parallel his favorite Surrealistic themes and images.  
The art-loving world is intimately familiar with the Artist's most famous images.





**BUST OF DANTE**



**DETAILS**  
**Year:** conceived in 1968, first merger in 1984  
**Height:** 30 cm  
**Material:** bronze  
**Technique:** lost wax  
**Editon size:** 8 plus 4 EA (plus 2 authorized foundry proofs)

**DETAILS**  
**Year:** 1965  
**Height:** 39 cm  
**Material:** bronze  
**Technique:** lost wax  
**Circulation:** 6 plus 2 HC



**BUST OF BEATRICE**

**LAST SUPPER**



**DETAILS**  
**Year:** 1978  
**Height:** 45.5 cm  
**Material:** plaster  
**Circulation:** one piece

**SURREALIST EYES**



**DETAILS**  
**Year:** 1980  
**Height:** 34.5 cm  
**Material:** silvered bronze  
**Technique:** lost wax  
**Circulation:** 999

**OTORHINOLOGICAL HEAD OF VENUS**



**DETAILS**  
**Year:** 1964  
**Height:** 59.5 cm  
**Material:** bronze  
**Technique:** lost wax  
**Circulation:** 8 plus 4 EA, 2EM, 1EF



**DETAILS**  
**Year:** 1983  
**Height:** 34 cm  
**Material:** bronze  
**Technique:** lost wax  
**Circulation:** 990

**BEETHOVEN'S HEAD**

**LILITH ET LA DOUBLE VICTOIRE DE SAMOTHRACE**



**DETAILS**  
**Year:** 1966  
**Height:** 18.5 cm  
**Material:** bronze  
**Technique:** lost wax  
**Circulation:** 6

**DETAILS**  
**Year:** 1964  
**Height:** 61 cm  
**Material:** golden bronze  
**Technique:** lost wax  
**Circulation:** 8 plus 4 EA



**LA MITE ET LA FLAMME**

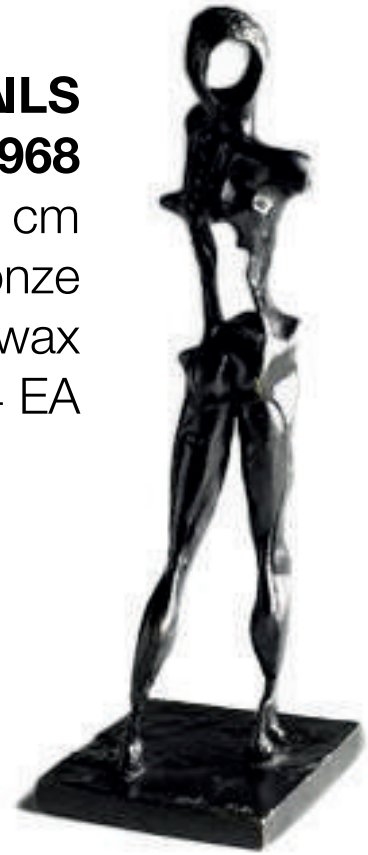


HOMAGE TO NEWTON (GOLD)



**DETAILS**  
**Year:** 1968  
**Height:** 27 cm  
**Material:** golden bronze  
**Technique:** lost wax  
**Circulation:** 8 plus 4 EA

**DETAILS**  
**Year:** 1968  
**Height:** 27.2 cm  
**Material:** bronze  
**Technique:** lost wax  
**Circulation:** 8 plus 4 EA



HOMAGE TO NEWTON (WITHOUT ARMS)

**DETAILS**  
**Year:** 1956  
**Height:** 45 cm  
**Material:** bronze  
**Technique:** lost wax  
**Circulation:** 8 plus 4 EA, 2 HCM and 1 HCF



RHINOCEROS HABILLE EN DENTELLES

**DETAILS**  
**Year:** 1973  
**Height:** 20.5 cm  
**Material:** bronze  
**Technique:** lost wax  
**Circulation:** 8 plus 4 EA



PREMONITION DE TIROIRS

CHRIST CARRYING THE CROSS



**DETAILS**  
**Year:** 1964  
**Height:** 55 cm  
**Material:** bronze  
**Technique:** lost wax  
**Circulation:** 6 plus 2 HC

**DETAILS**  
**Year:** 1966  
**Height:** 30 cm  
**Material:** bronze  
**Technique:** lost wax  
**Circulation:** 6 plus 2 HC



L'ŒSCAVE MICHELIN

**DETAILS**  
**Year:** 1956  
**Height:** 140 cm  
**Material:** bronze  
**Technique:** lost wax  
**Circulation:** 8 plus 4 EA, 2 HCM and 1 HCF



RHINOCEROS COSMIQUE



**SWAN  
ELEPHANT**



**DETAILS**  
**Year:** 1967  
**Height:** 11 cm  
**Material:** bronze  
**Technique:** lost wax  
**Circulation:** 6 plus 2 HC

**THE THUMB,  
CHESSGAME HOMAGE  
TO MARCEL DUCHAMP**



**DETAILS**  
**Year:** 1966  $\text{\textcircled{D}}$  1970  
**Height:** between 9.2 and 3.2 cm  
**Material:** silver and gold-plated silver  
**Technique:** lost wax  
**Circulation:** 250 sets

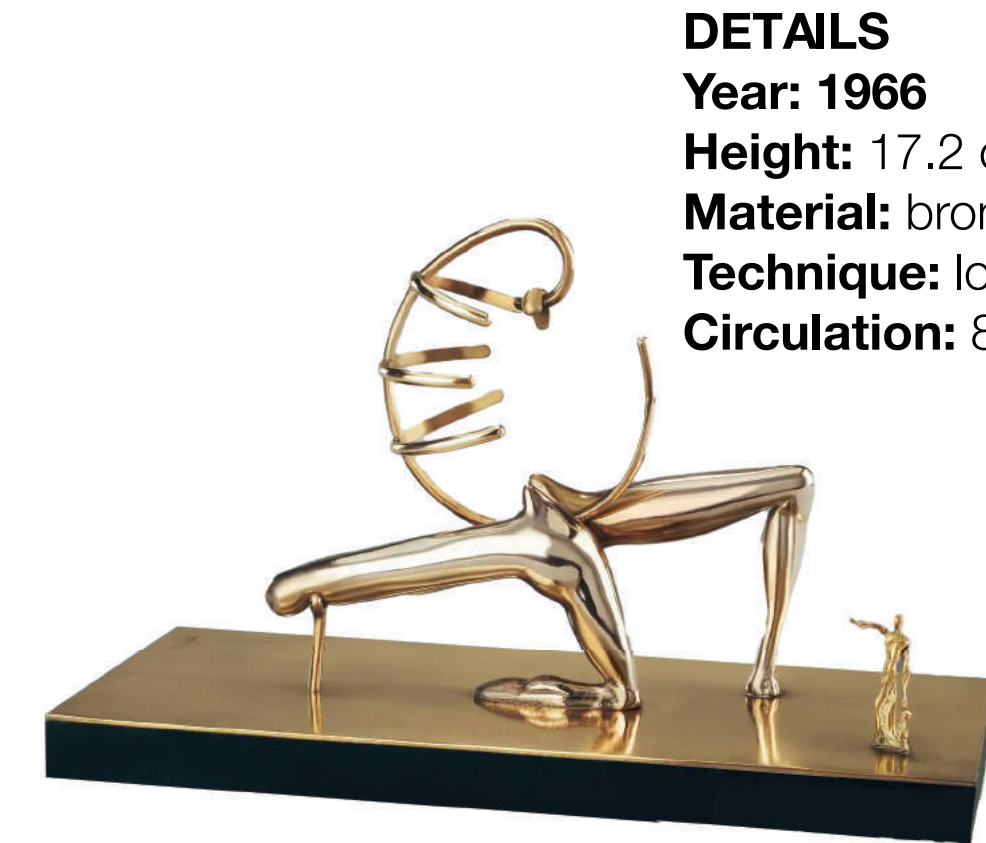


**DETAILS**  
**Year:** 1964  
**Height:** 10 cm  
**Material:** golden bronze  
**Technique:** lost wax  
**Circulation:** one piece  
**TASSE POUR NE PAS BOIRE**



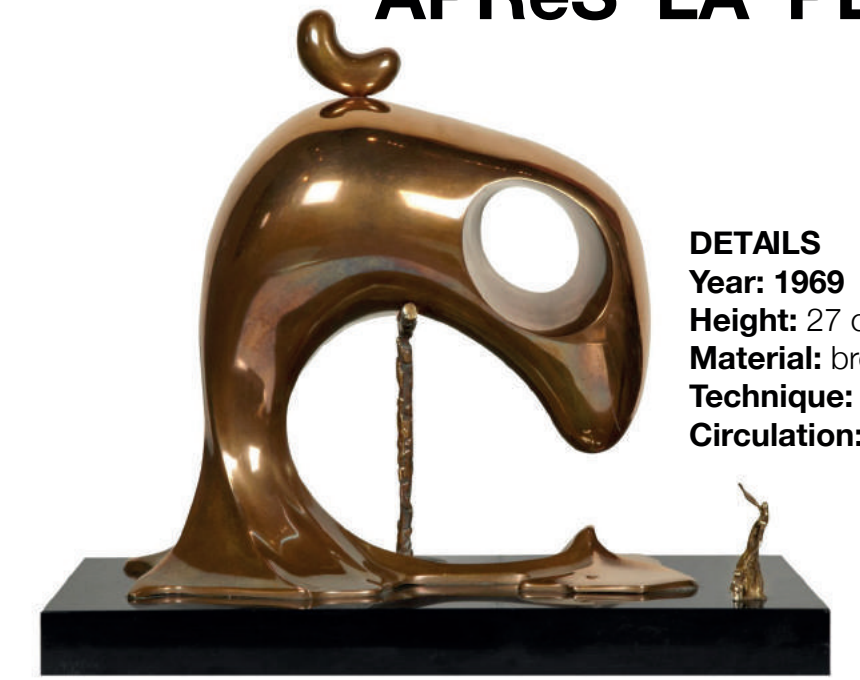
**YANG ET YIN**

**DETAILS**  
**Year:** 1968  
**Height:** 13.5 cm  
**Material:** bronze  
**Technique:** lost wax  
**Circulation:** 8



**MANNEQUIN JAVANAIS**

**DETAILS**  
**Year:** 1966  
**Height:** 17.2 cm  
**Material:** bronze  
**Technique:** lost wax  
**Circulation:** 8 plus 4 EA



**VESTIGE ATAVIQUE  
APRÉS LA PLUIE**

**DETAILS**  
**Year:** 1969  
**Height:** 27 cm  
**Material:** bronze  
**Technique:** lost wax  
**Circulation:** 8 plus 4 EA

**DETAILS**  
**Year:** 1970  
**Height:** 22 cm  
**Material:** bronze  
**Technique:** lost wax  
**Circulation:** 8 plus 4 EA



**LA MASQUE FUNERAIRE  
DE NAPOLEÓN**





**VFNUS DE MILO  
WITH DRAWERS**

**DETAILS**

**Year:** 1970

**Height:** 70 cm

**Material:** polychrome bronze,  
mixed media

**Technique:** assemblage

**Circulation:** 8 plus 4 EA



**VFNUS DE MILO  
WITH DRAWERS**

**DETAILS**

**Year:** 1936

**Height:** 38 cm

**Material:** painted bronze

**Technique:** lost wax

**Circulation:** 150



**NU FfMININ HYSTfRIQUE  
ET AfRODYNAMIQUE**

**DETAILS**

**Year:** designed in 1934,  
first casting in 1973

**Height:** 26 cm

**Material:** painted bronze

**Technique:** lost wax

**Circulation:** 8 plus 4 EA

# DALÍ D'OR

In the 1950s Dalí collaborated with the extravagant designer Mafalda Davis. Together they created an elegant gold cutler.

In the late 1960s, Dalí created a collection of gold coins, in which he appears with his wife, Gala:  
With this coins he created twelve pure gold objects assembled from this ÓDalí d'ÓOrÓ coin collection

120  
anniversary



# PENDANT AVIDA DOLLARS



**DETAILS**  
**Year:** 1967  
**Height:** 7.5 cm  
**Material:** 18K gold  
**Technique:** assembly of gold coins  
**Edition Size:** 99



**DETAILS**  
**Year:** 1967  
**Height:** 7.5 cm  
**Material:** 18K gold  
**Technique:** assembly of gold coins  
**Edition Size:** 300

# DALÊ PENDANT D GALA



# MONTRE PETITE CUILLERE

**DETAILS**  
**Year:** 1957  
**Height:** various, 12-22 cm  
**Material:** gold plated silver and semi-precious stones  
**Technique:** lost wax process  
**Edition Size:** 99



**DETAILS**  
**Year:** 1965  
**Height:** 11 cm  
**Material:** 18K gold  
**Technique:** lost wax process  
**Edition Size:** 8

# MONTRE PETITE CUILLERE

# DALINIAN PENDANT



**DETAILS**  
**Year:** 1967  
**Height:** 5 cm  
**Material:** 18K gold  
**Technique:** assembly of gold coins  
**Edition Size:** 99



**DETAILS**  
**Year:** 1967  
**Height:** 19 cm  
**Material:** 18K gold  
**Technique:** assembly of gold coins  
**Edition Size:** 300

# ISIS BRINGS PORTRAIT

# CADUCEE II



**DETAILS**  
**Year:** 1983  
**Height:** 31,5 cm  
**Material:** 18K gold, silver and amethyst  
**Technique:** lost wax process  
**Edition Size:** 8



**DETAILS**  
**Year:** 1983  
**Height:** 33,5 cm  
**Material:** 18K gold, silver and amethyst  
**Technique:** lost wax process  
**Edition Size:** 8

# CADUCEE I



# CROSS



**DETAILS**  
**Year:** 1967  
**Height:** 18 cm  
**Material:** 18K gold  
**Technique:** assembly of gold coins  
**Edition Size:** 300



**DETAILS**  
**Year:** 1967  
**Height:** 18.5 cm  
**Material:** 18K gold  
**Technique:** assembly of gold coins  
**Edition Size:** 300

# DALÈ FLOWER

# PORTE CIGARETTE



**DETAILS**  
**Year:** 1967  
**Height:** 3.5 cm  
**Material:** 18K gold  
**Technique:** assembly of gold coins  
**Edition Size:** 300



**DETAILS**  
**Year:** 1967  
**Height:** 27 cm  
**Material:** 18K gold  
**Technique:** assembly of gold coins  
**Edition Size:** 300

# MIRROR

# TURTLE FOR GOOD LUCK



**DETAILS**  
**Year:** 1967  
**Height:** 15 cm  
**Material:** 18K gold  
**Technique:** assembly of gold coins  
**Edition Size:** 300



**DETAILS**  
**Year:** 1967  
**Height:** 20 cm  
**Material:** 18K gold  
**Technique:** assembly of gold coins  
**Edition Size:** 300

# GLORIOUS SUN

# KEY



**DETAILS**  
**Year:** 1967  
**Height:** 7.5 cm  
**Material:** 18K gold  
**Technique:** assembly of gold coins  
**Edition Size:** 300



**DETAILS**  
**Year:** 1967  
**Height:** 5 cm  
**Material:** 18K gold  
**Technique:** assembly of gold coins  
**Edition Size:** 300

# MAGIC SNAKE PENDANT



# PRECIOUS SCULPTURES

Jewel - Encrusted and Silver

Dal' created these exciting sculptures to parallel his favorite Surrealistic themes and images.  
The art-loving world is intimately familiar with the Artist's most famous images.

ÓSilver Sculptures CollectionÓ is all made in Silver 950 set on a base of translucent rock crystal.

Created using the historic lost wax technique, the sculptures are subject to the same process as the bronze sculptures,  
and are created by hand by artisans of Perseo Art Foundry.





# ALICE IN WONDERLAND



## DETAILS

**Year:** conceived in 1977, first cast in 2008  
**Height:** 10.4 cm  
**Material:** 18K gold  
**Precious stones:** diamonds and rubies  
**Base:** crystal  
**Run:** 12 with diamonds and rubies



## DETAILS

**Year:** conceived in 1977, first cast in 2015  
**Height:** 43 cm  
**Material:** silver  
**Base:** rock crystal  
**Technique:** lost wax  
**Edition Size:** 49 plus 5 EA

# DANCE OF TIME II



## DETAILS

**Year:** conceived in 1977, first cast in 2015  
**Height:** 17.3 cm  
**Material:** silver  
**Base:** rock crystal  
**Technique:** lost wax  
**Edition Size:** 49 plus 5 EA



## DETAILS

**Year:** conceived in 1979, first cast in 2008  
**Height:** 8 cm  
**Material:** 18K gold  
**Precious stones:** diamonds and rubies  
**Base:** crystal  
**Run:** 12 with diamonds and rubies

# DANCE OF TIME I



## DETAILS

**Year:** conceived in 1979, first cast in 2008  
**Height:** 11.5 cm  
**Material:** 18K gold  
**Precious stones:** diamonds and rubies  
**Base:** crystal  
**Run:** 12 with diamonds and rubies



## DETAILS

**Year:** conceived in 1979, first cast in 2015  
**Height:** 22.4 cm  
**Material:** silver  
**Base:** rock crystal  
**Technique:** lost wax  
**Edition Size:** 49 plus 5 EA

# DANCE OF TIME III



## DETAILS

**Year:** conceived in 1979, first cast in 2008  
**Height:** 8 cm  
**Material:** 18K gold  
**Precious stones:** diamonds and rubies  
**Base:** crystal  
**Run:** 12 with diamonds and rubies



## DETAILS

**Year:** conceived in 1977, first cast in 2015  
**Height:** 14.8 cm  
**Material:** silver  
**Base:** rock crystal  
**Technique:** lost wax  
**Edition Size:** 49 plus 5 EA



# DANCE OF TIME II



**DETAILS**  
**Year:** conceived in 1979, first cast in 2008  
**Height:** 12.7 cm  
**Material:** 18K gold  
**Precious stones:** diamonds and 1 ruby  
**Base:** crystal  
**Run:** 12 with diamonds and rubies



**DETAILS**  
**Year:** conceived in 1977, first cast in 2015  
**Height:** 31 cm  
**Material:** silver  
**Base:** rock crystal  
**Technique:** lost wax  
**Edition Size:** 49 plus 5 EA

# DALINIAN DANCER



**DETAILS**  
**Year:** conceived in 1949, first cast in 2008  
**Height:** 10.7 cm  
**Material:** 18K gold  
**Precious stones:** diamonds and 1 ruby  
**Base:** crystal  
**Run:** 12 with diamonds and rubies



**DETAILS**  
**Year:** conceived in 1976, first cast in 2008  
**Height:** 13.5 cm  
**Material:** 18K gold  
**Precious stones:** diamonds and 1 emerald  
**Base:** crystal  
**Run:** 12 with diamonds and emeralds

# TRIUMPHANT ANGEL

# UNICORN



**DETAILS**  
**Year:** conceived in 1977, first cast in 2015  
**Height:** 28 cm  
**Material:** silver  
**Base:** rock crystal  
**Technique:** lost wax  
**Edition Size:** 49 plus 5 EA



**DETAILS**  
**Year:** conceived in 1979, first cast in 2008  
**Height:** 12 cm  
**Material:** 18K gold  
**Precious stones:** diamonds, rubies, and 2 sapphires  
**Base:** crystal  
**Run:** 12 with diamonds, rubies and sapphires

# SPACE VENUS



**DETAILS**  
**Year:** conceived in 1977, first cast in 2008  
**Height:** 11.2 cm  
**Material:** 18K gold  
**Precious stones:** diamonds  
**Base:** crystal  
**Run:** 12 with diamonds



**DETAILS**  
**Year:** conceived in 1976, first cast in 2008  
**Height:** 1 cm  
**Material:** 18K gold  
**Precious stones:** diamonds, rubies and sapphires  
**Base:** crystal  
**Run:** 12 with diamonds, rubies and sapphires

# LADY GODIVA WITH BUTTERFLIES



NOBILITY OF TIME



DETAILS

**Year:** conceived in 1977, first cast in 2015  
**Height:** 29.5 cm  
**Material:** silver  
**Base:** rock crystal  
**Technique:** lost wax  
**Edition Size:** 49 plus 5 EA

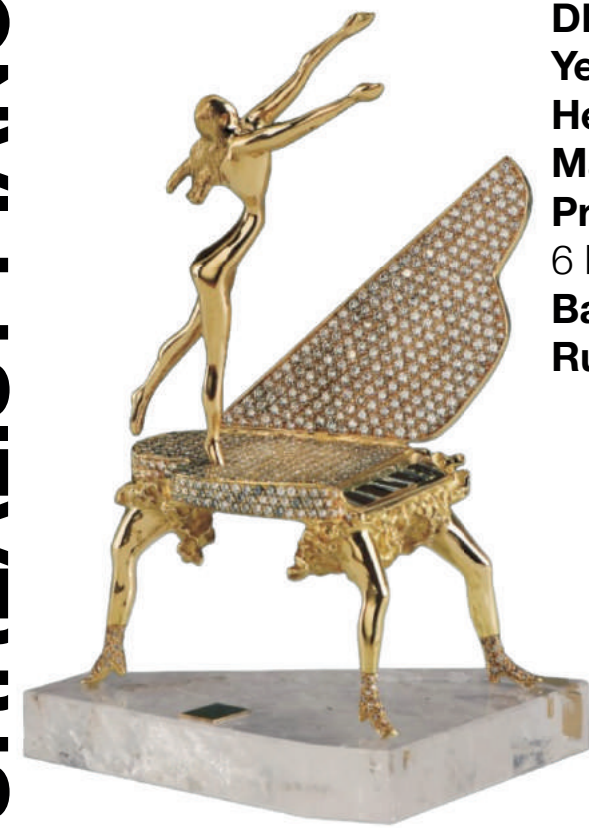
DETAILS

**Year:** conceived in 1977, first cast in 2015  
**Height:** 21 cm  
**Material:** silver  
**Base:** rock crystal  
**Technique:** lost wax  
**Edition Size:** 49 plus 5 EA



SAINT GEORGE AND THE DRAGON

SURREALIST PIANO



DETAILS

**Year:** conceived in 1954, first cast in 2008  
**Height:** 8 cm  
**Material:** 18K gold  
**Precious stones:** diamonds, 6 baguette diamonds, 12 baguette sapphires  
**Base:** crystal  
**Run:** 12 with diamonds and sapphires

DETAILS

**Year:** conceived in 1954, first cast in 2008  
**Height:** 8 cm  
**Material:** 18K gold  
**Precious stones:** diamonds, 6 baguette diamonds, 12 baguette sapphires  
**Base:** crystal  
**Run:** 12 with diamonds and sapphires



TRIUMPHANT ELEPHANT





# SCULPTURES

## MUSEUM MONUMENTAL LIMITED

Dal' created these exciting sculptures to parallel his favorite Surrealistic themes and images.  
The art-loving world is intimately familiar with the Artist's most famous images.

ÓSilver Sculptures CollectionÓ is all made in Silver 950 set on a base of translucent rock crystal.

Created using the historic lost wax technique, the sculptures are subject to the same process as the bronze sculptures,  
and are created by hand by artisans of Perseo Art Foundry.



# DALINIAN DANCER

LIMITED EDITION



**DETAILS**  
**Year:** devised in 1949,  
first cast in 1984  
**Height:** 40.5 cm  
**Material:** bronze  
**Technique:** lost-wax  
**Edition Size:** 350+35 EA

MUSEUM EDITION



**DETAILS**  
**Year:** designed in 1949, first cast in 1984  
**Height:** 175 cm  
**Material:** bronze  
**Technique:** lost wax  
**Edition Size:** 8 plus 4 EA  
(plus 2 authorized foundry proofs)

# SURREALIST NEWTON

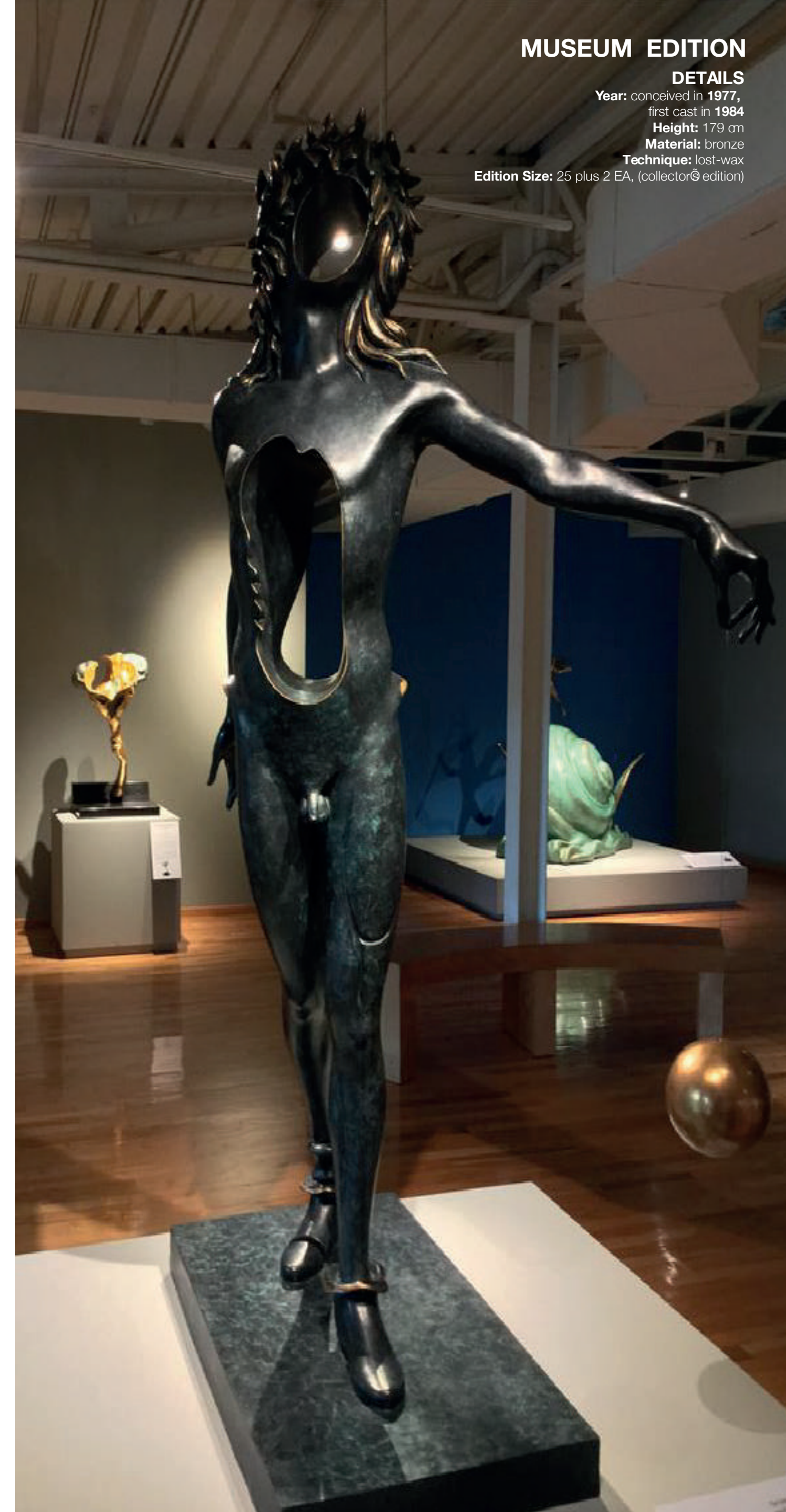
LIMITED EDITION

**DETAILS**  
**Year:** conceived in 1977,  
first cast in 1984  
**Height:** 49 cm  
**Material:** bronze  
**Technique:** lost-wax  
**Edition Size:** 350+35 EA



MUSEUM EDITION

**DETAILS**  
**Year:** conceived in 1977,  
first cast in 1984  
**Height:** 179 cm  
**Material:** bronze  
**Technique:** lost-wax  
**Edition Size:** 25 plus 2 EA, (collector's edition)





# WOMAN AFLAME



LIMITED EDITION

## DETAILS

**Year:** conceived and first cast in 1980  
**Height:** 84 cm  
**Material:** bronze  
**Technique:** lost-wax  
**Edition Size:** 350+35 EA

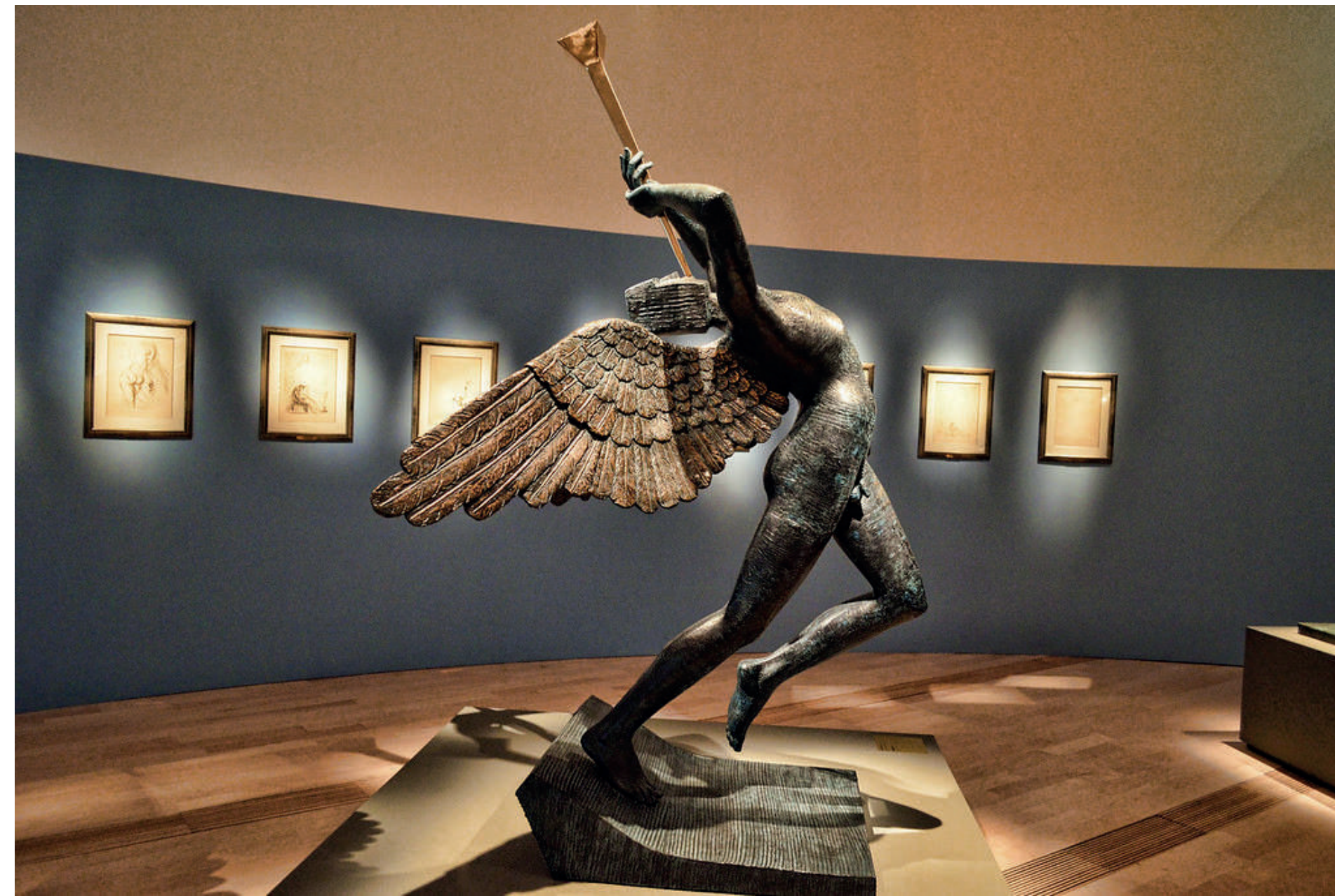
## MUSEUM EDITION



MONUMENTAL EDITION

## DETAILS

**Year:** devised and first cast in 1980  
**Height:** 360 cm  
**Material:** bronze  
**Technique:** lost wax  
**Edition Size:** 8 plus 4 EA



MUSEUM EDITION

## DETAILS

**Year:** conceived in 1976, first cast in 1984  
**Height:** 225 cm  
**Material:** bronze  
**Technique:** lost wax  
**Edition Size:** 8 plus 4 EA  
 (plus 2 authorized foundry proofs)

# TRIUMPHANT ANGEL



LIMITED EDITION

## DETAILS

**Year:** conceived in 1976,  
 first cast in 1984  
**Height:** 50 cm  
**Material:** bronze  
**Technique:** lost-wax  
**Edition Size:** 350+35 EA





**DETAILS**  
**Year:** conceived in 1979, first cast in 1984  
**Height:** 210 cm  
**Material:** bronze  
**Technique:** lost wax  
**Edition Size:** 8 plus 4 EA (plus 2 authorized foundry proofs)

LIMITED EDITION M USEUM EDITION



**DETAILS**  
**Year:** conceived in 1979, first cast in 1984  
**Height:** 320 cm  
**Material:** bronze  
**Technique:** lost-wax casting  
**Edition Size:** 8 plus 4 EA (plus 2 authorized Foundry proofs)

MONUMENTAL EDITION



**DETAILS**  
**Year:** conceived in 1979, first cast in 1984  
**Height:** 38.5 cm  
**Material:** bronze  
**Technique:** lost-wax  
**Edition Size:** 350+35 EA

# DANCE OF TIME I

CUBIST ANGEL



**DETAILS**  
**Year:** 1983  
**Height:** 163 cm  
**Material:** bronze  
**Technique:** lost-wax  
**Edition Size:** 8 plus 4 EA



**DETAILS**  
**Year:** 1983  
**Height:** 163 cm  
**Material:** bronze  
**Technique:** lost-wax  
**Edition Size:** 8 plus 4 EA

SURREALIST ANGEL



**DETAILS**  
**Year:** 1972  
**Height:** 29 cm  
**Material:** polychrome bronze  
**Technique:** lost-wax  
**Edition Size:** 8 plus 4 EA

# THE SUBLIME MOMENT



# SNAIL AND THE ANGEL



**DETAILS**  
**Year:** conceived in 1977,  
 first cast in 1984  
**Height:** 151 cm  
**Material:** bronze  
**Technique:** lost wax  
**Edition Size:** 7 plus 3 EA, 2 HC  
 (plus 2 authorized foundry proofs)



**DETAILS**  
**Year:** conceived in 1977,  
 first cast in 1984  
**Height:** 60 cm  
**Material:** bronze  
**Technique:** lost wax process  
**Edition Size:** 350+35 EA

# NOBILITY OF TIME

LIMITED EDITION



**DETAILS**  
**Year:** conceived in 1977,  
 first cast in 1984  
**Height:** 490 cm  
**Material:** bronze  
**Technique:** lost wax process  
**Edition Size:** 8 plus 4 EA

MONUMENTAL EDITION



**DETAILS**  
**Year:** devised in 1977,  
 first cast in 1984  
**Height:** 44 cm  
**Material:** bronze  
**Technique:** lost-wax  
**Edition Size:** 350+35 EA

LIMITED EDITION



**DETAILS**  
**Year:** conceived in 1977,  
 first cast in 1984  
**Height:** 300 cm  
**Material:** bronze  
**Technique:** lost wax  
**Edition Size:** 8 plus 4 EA

MONUMENTAL EDITION



## LIMITED EDITION

### DETAILS

**Year:** conceived in 1977,  
first cast in 1984  
**Height:** 65cm  
**Material:** bronze  
**Technique:** lost wax process  
**Edition Size:** 350+35 EA



## MONUMENTAL EDITION



### DETAILS

**Year:** conceived in 1977,  
first cast in 1984  
**Height:** 350 cm  
**Material:** bronze  
**Technique:** lost wax  
**Edition Size:** 8 plus 4 EA

# SPACE VENUS

## MUSEUM EDITION



### DETAILS

**Year:** conceived in 1977,  
first merger in 1984  
**Height:** 124 cm  
**Material:** bronze  
**Technique:** lost wax  
**Circulation:** 7 plus 3 EA, 2 HC  
(plus 2 authorized foundry proofs)



**LIMITED EDITION**

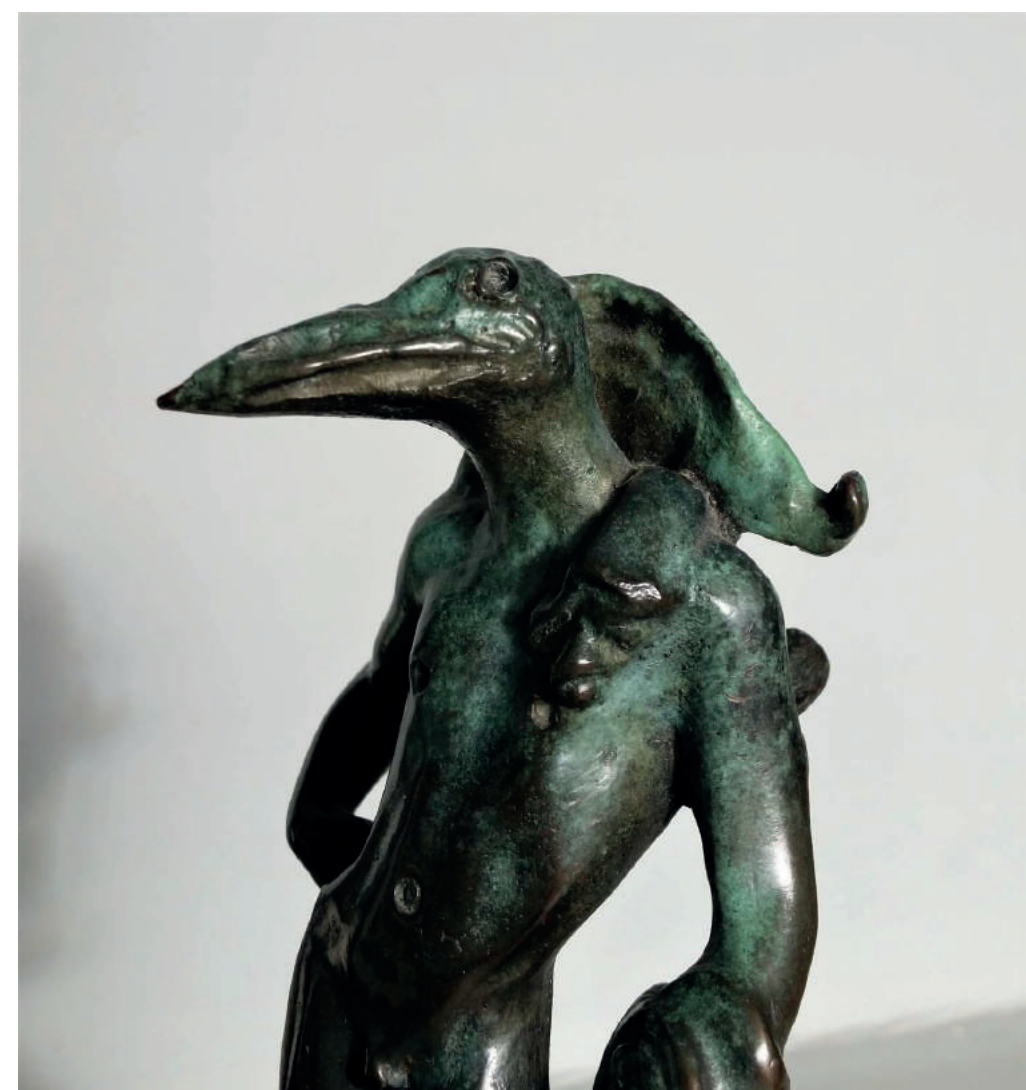


**DETAILS**

**Year:** conceived in 1972,  
first cast in 1981  
**Height:** 29 cm  
**Material:** bronze  
**Technique:** lost-wax  
**Edition Size:** 350+35 EA

**DETAILS**

**Year:** conceived in 1972,  
first cast in 1981  
**Height:** 29 cm  
**Material:** bronze  
**Technique:** lost-wax  
**Edition Size:** 350+35 EA



**MUSEUM EDITION**

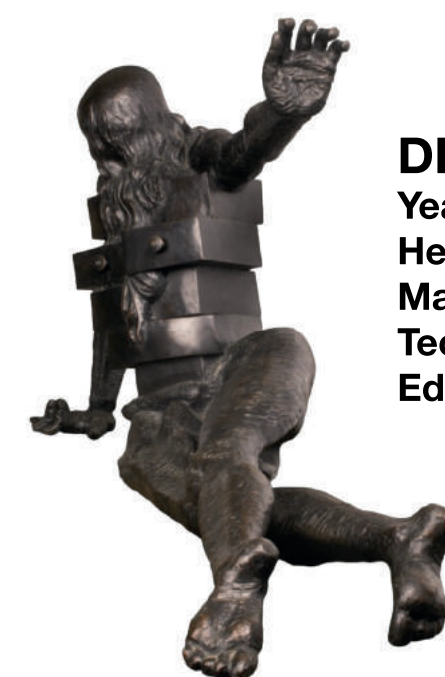
**BIRD  
MAN**

**THE TWISTED  
CHRIST**



**DETAILS**

**Year:** 1976  
**Height:** 101, 5 cm  
**Material:** polychrome bronze  
**Technique:** lost-wax  
**Edition Size:** 8 plus 4 EA,  
2 non-commercial proofs and a foundry proof



**DETAILS**

**Year:** 1982  
**Height:** 96 cm  
**Material:** polychrome bronze  
**Technique:** lost-wax  
**Edition Size:** 11 plus 1 EA

**CABINET  
ANTHROPOMORPHIQUE**



**DETAILS**

**Year:** 1964  
**Height:** 114 cm  
**Material:** bronze  
**Technique:** lost-wax  
**Edition Size:** 8 plus 4 EA, 2 HCM and 1 HCF

**GRANDE VENUS DE  
MILO AUX TIROIRS**



# MONUMENTAL EDITION



## DETAILS

**Year:** conceived in 1979,  
first cast in 1984  
**Height:** 320 cm  
**Material:** bronze  
**Technique:** lost-wax casting  
**Edition Size:** 8 plus 4 EA  
(plus 2 authorized  
Foundry proofs)

LIMITED EDITION



## DETAILS

**Year:** conceived in 1979,  
first cast in 1984  
**Height:** 30.5cm  
**Material:** bronze  
**Technique:** lost wax process  
**Edition Size:** 350+35 EA

## DETAILS

**Year:** conceived in 1979, first cast in 1984  
**Height:** 124 cm  
**Material:** bronze  
**Technique:** lost wax  
**Edition Size:** 8 plus 4 EA  
(plus 2 authorized foundry proofs)

# DANCE OF TIME II



MUSEUM EDITION



## MONUMENTAL EDITION



### DETAILS

**Year:** devised and first cast in 1980  
**Height:** 724 cm  
**Material:** bronze  
**Technique:** lost wax  
**Edition Size:** 8 plus 4 EA

# SPACE ELEPHANTS

**DETAILS**  
**Year:** conceived and first cast in 1980  
**Height:** 94 cm  
**Material:** bronze  
**Technique:** lost-wax  
**Edition Size:** 350+35 EA



LIMITED EDITION

**DETAILS**  
**Year:** conceived and first merger in 1980  
**Height:** 227 cm  
**Material:** bronze  
**Technique:** lost wax  
**Circulation:** 6 plus 3EA, 3HC



MUSEUM EDITION



**DETAILS**  
**Year:** conceived in 1977,  
 first cast in 1984  
**Height:** 46 cm  
**Material:** bronze  
**Technique:** lost-wax  
**Edition Size:** 350+35 EA

LIMITED EDITION



MUSEUM EDITION

**DETAILS**  
**Year:** conceived in 1977,  
 first cast in 1984  
**Height:** 148 cm  
**Material:** bronze  
**Technique:** lost wax  
**Edition Size:** 7 plus 3 EA, 2 HC  
 (plus 2 authorized foundry proofs)

**DETAILS**  
**Year:** conceived in 1977,  
 first cast in 1984  
**Height:** 300 cm  
**Material:** bronze  
**Technique:** lost wax  
**Edition Size:** 8 plus 4 EA



# SAINT GEORGE AND THE DRAGON

BUSTE DE FEMME  
 RfTROSPectif



**DETAILS**  
**Year:** original sculpture created in 1933,  
 bronze edition cast in 1977  
**Height:** 101, 5 cm  
**Material:** painted bronze and various materials  
**Technique:** lost-wax  
**Edition Size:** 8 plus 4 EA



**DETAILS**  
**Year:** 1970  
**Height:** 116 cm  
**Material:** bronze  
**Technique:** lost-wax  
**Edition Size:** 8 plus 4 EA

CHAISE AUX  
 CULLIFRES



**DETAILS**  
**Year:** 1981  
**Height:** 203 cm  
**Material:** bronze  
**Technique:** lost-wax  
**Edition Size:** 8 plus 4 EA

FEMME È LA  
 TÆTE DE ROSE



# LADY GODIVA WITH BUTTERFLIES

**DETAILS**  
**Year:** conceived in 1954,  
first cast in 1984  
**Height:** 249 cm  
**Material:** bronze  
**Technique:** lost wax process  
**Edition Size:** 8 plus 4 EA  
(plus 2 authorized foundry tests)



MUSEUM EDITION

## SURREALIST PIANO

**DETAILS**  
**Year:** conceived in 1954, first cast in 1984  
**Height:** 488 cm  
**Material:** bronze  
**Technique:** lost wax process  
**Edition Size:** 8 plus 4 EA  
(plus 2 authorized foundry proofs)



MONUMENTAL EDITION

LIMITED EDITION



**DETAILS**  
**Year:** conceived in 1954,  
first cast in 1984  
**Height:** 60 cm  
**Material:** bronze  
**Technique:** lost wax process  
**Edition Size:** 350+35 EA

MUSEUM EDITION



**DETAILS**  
**Year:** conceived in 1976,  
first cast in 1984  
**Height:** 167 cm  
**Material:** bronze  
**Technique:** lost-wax  
**Edition Size:** 8 plus 4 EA  
(plus 2 authorized foundry proofs)

LIMITED EDITION



**DETAILS**  
**Year:** conceived in 1976,  
first cast in 1984  
**Height:** 51 cm  
**Material:** bronze  
**Technique:** lost-wax  
**Edition Size:** 350+35 EA





# MONUMENTAL EDITION

**DETAILS**  
Year: conceived in 1977, first cast in 1984  
Height: 380 cm  
Material: bronze  
Technique: lost wax  
Edition Size: 8 plus 4 EA



# MUSEUM EDITION

**DETAILS**  
Year: conceived in 1977, first cast in 1984  
Height: 150 cm  
Material: bronze  
Technique: lost wax  
Edition Size: 7 plus 3 EA, 2 HC, 2 EF



# LIMITED EDITION

**DETAILS**  
Year: conceived in 1977, first cast in 1984  
Height: 51 cm  
Material: bronze  
Technique: lost wax process  
Edition Size: 350+35 EA

# PROFILE OF TIME



## LIMITED EDITION



**DETAILS**  
**Year:** conceived in 1977,  
first cast in 1984  
**Height:** 44 cm  
**Material:** bronze  
**Technique:** lost-wax  
**Edition Size:** 350+35 EA

## MUSEUM EDITION



# VISION OF THE ANGEL

**DETAILS**  
**Year:** conceived in 1977,  
first cast in 1984  
**Height:** 140 cm  
**Material:** bronze  
**Technique:** lost-wax  
**Edition Size:** 7 plus 3 EA, 2 HC  
(plus 2 authorized foundry proofs)

## LOBSTER TELEPHONE



**DETAILS**  
**Year:** conceived in 1936, reconstructed circa 1977  
**Height:** 33 cm  
**Material:** plastic, painted plaster and various materials  
**Technique:** assemblage  
**Edition Size:** model for an edition of 8 plus 4 EA

**DETAILS**  
**Year:** 1966  
**Height:** 51.5 cm  
**Material:** bronze  
**Technique:** lost-wax  
**Edition Size:** 6 plus 3 EA



## LE VIOLINE



**DETAILS**  
**Year:** conceived in 1932, recreated in 1973  
**Height:** 48 cm  
**Material:** various materials  
**Technique:** assemblage  
**Edition Size:** 8 plus 4 EA

## OBJET SURREALISTE À FONCTIONNEMENT SYMBOLIQUE





# SURREALIST WARRIOR



## DETAILS

**Year:** conceived in 1971,  
first cast in 1984  
**Height:** 51 cm  
**Material:** bronze  
**Technique:** lost-wax  
**Edition Size:** 350+35 EA

LIMITED EDITION



## DETAILS

**Year:** conceived in 1971,  
first cast in 1984  
**Height:** 167 cm  
**Material:** bronze  
**Technique:** lost-wax  
**Edition Size:** 8 plus 4 EA  
(plus 2 authorized foundry proofs)

MUSEUM EDITION





**DETAILS**

**Year:** conceived in 1979,  
first cast in 1984  
**Height:** 26.5 cm  
**Material:** bronze  
**Technique:** lost wax process  
**Edition Size:** 350+35 EA

**DANCE OF  
TIME III**

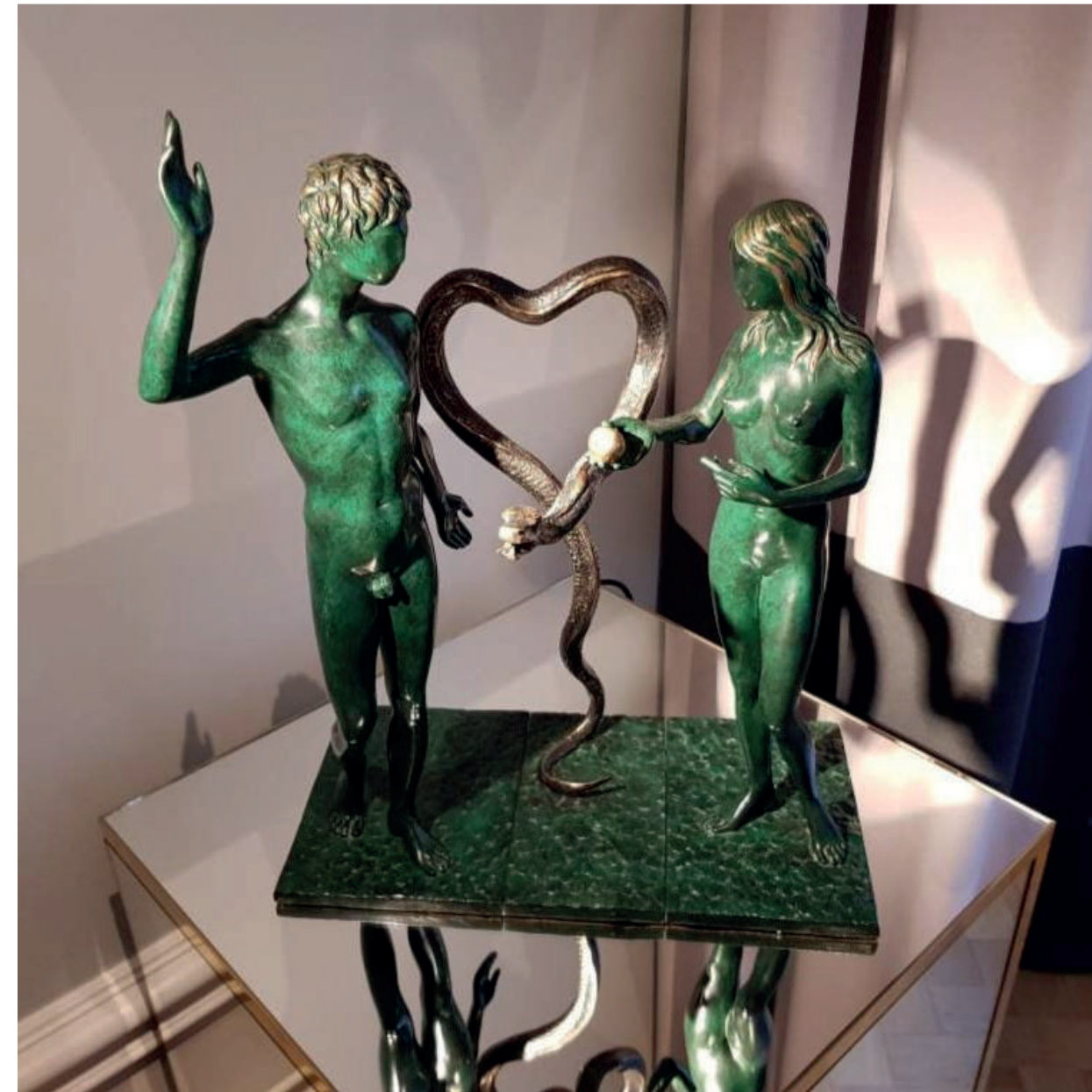
**MUSEUM EDITION**



**LIMITED EDITION**

**DETAILS**

**Year:** conceived in 1979,  
first cast in 1984  
**Height:** 124 cm  
**Material:** bronze  
**Technique:** lost wax process  
**Edition Size:** 8 plus 4 EA  
(plus 2 authorized foundry proofs)



**DETAILS**

**Year:** conceived in 1968,  
first cast in 1984  
**Height:** 52 cm  
**Material:** bronze  
**Technique:** lost-wax  
**Edition Size:** 350+35 EA

**ADAM AND  
EVE**

**LIMITED EDITION**



**DETAILS**

**Year:** conceived in 1968,  
first cast in 1984  
**Height:** 200 cm  
**Material:** bronze  
**Technique:** lost-wax  
**Edition Size:** 8 plus 4 EA  
(plus 2 authorized foundry proofs)

**MUSEUM EDITION**



**TOREADOR  
HALUCINOGENE**



**DETAILS**  
Year: 1977  
Height: 208 cm  
Material: bronze, silver spoons, scissors, saxophone and drum  
Technique: lost wax  
Edition Size: 6 plus 3 EA



**DETAILS**  
Year: 1966  
Height: 74 cm  
Material: painted bronze  
Technique: lost wax  
Edition Size: 6 plus 3 EA

**LILITH ET LA  
DOUBLE VICTOIRE  
DE SAMOTHRACE**

**DETAILS**  
Year: 1973  
Height: 240 cm  
Material: bronze  
Technique: lost-wax  
Edition Size: 8 plus 1 EA, 3 HC



**VfNUS È LA  
GIRAFE**

**MAN WITH  
BUTTERFLY**



**LIMITED EDITION**

**DETAILS**  
Year: devised in 1968,  
first cast in 1984  
Height: 55.5 cm  
Material: bronze  
Technique: lost-wax  
Edition Size: 350+35 EA



**DETAILS**  
Year: devised in 1968,  
first cast in 1984  
Height: 179 cm  
Material: bronze  
Technique: lost-wax  
Edition Size: 8 plus 4 EA  
(plus 2 authorized foundry proofs)

**MUSEUM EDITION**



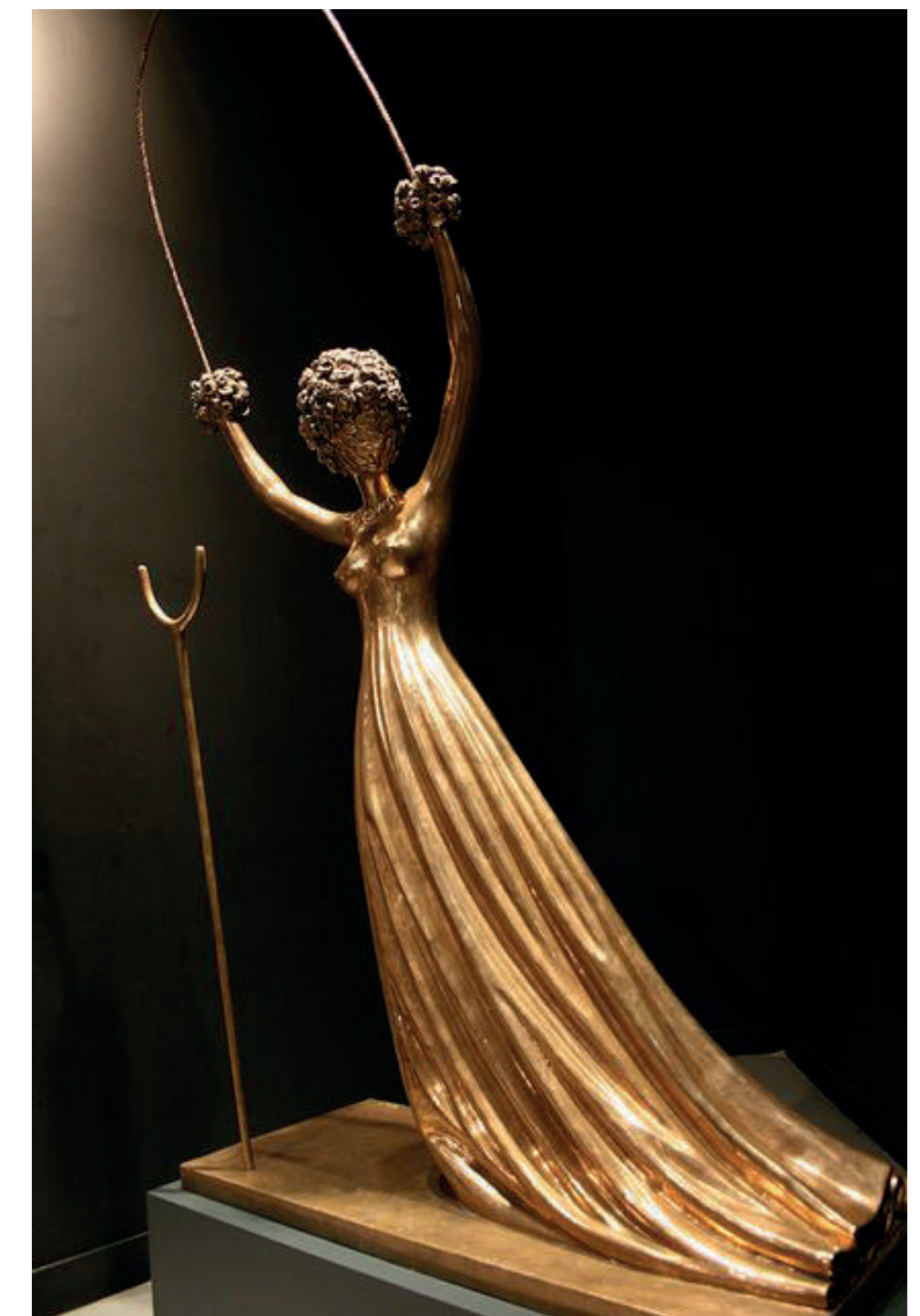
# WONDERLAND ALICE IN CITY

LIMITED EDITION  
**DETAILS**  
**Year:** devised in 1977,  
first cast in 1984  
**Height:** 90.5 cm  
**Material:** bronze  
**Technique:** lost-wax  
**Edition Size:** 350+35 EA



**MONUMENTAL EDITION**

**DETAILS**  
**Year:** devised in 1977,  
first cast in 1984  
**Height:** 227 cm  
**Material:** bronze  
**Technique:** lost-wax  
**Edition Size:** 7 plus 3 EA, 2 HC  
(plus 2 authorized foundry proofs)



**MUSEUM EDITION**

**DETAILS**  
**Year:** devised in 1977,  
first cast in 1984  
**Height:** 480 cm  
**Material:** bronze  
**Technique:** lost-wax  
**Edition Size:** 8 plus 4 EA





# HOMAGE TO NEWTON



LIMITED EDITION

## DETAILS

**Year:** conceived and first cast in 1980  
**Height:** 35 cm  
**Material:** bronze  
**Technique:** lost-wax  
**Edition Size:** 350+35 EA

MUSEUM EDITION



## DETAILS

**Year:** 1969  
**Height:** 132 cm  
**Material:** bronze  
**Technique:** lost wax  
**Circulation:** 8



# WOMAN A FLAME



LIMITED EDITION

**DETAILS**  
**Year:** conceived and first cast in 1980  
**Height:** 84 cm  
**Material:** bronze  
**Technique:** lost-wax  
**Edition Size:** 350+35 EA

MUSEUM EDITION



**DETAILS**  
**Year:** devised and first cast in 1980  
**Height:** 176 cm  
**Material:** bronze  
**Technique:** lost wax  
**Edition Size:** 6 plus 3 EA, 3 HC



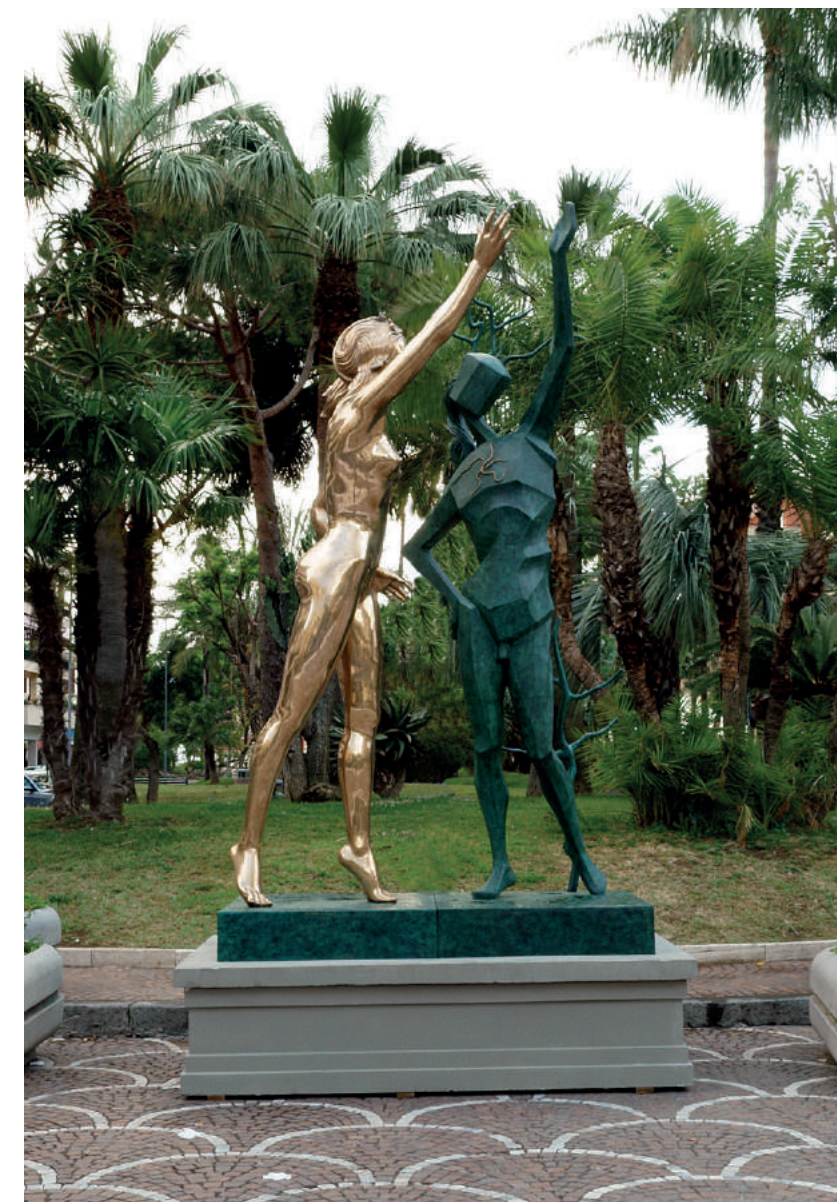
MONUMENTAL EDITION

**DETAILS**  
**Year:** devised and first cast in 1980  
**Height:** 360 cm  
**Material:** bronze  
**Technique:** lost wax  
**Edition Size:** 8 plus 4 EA



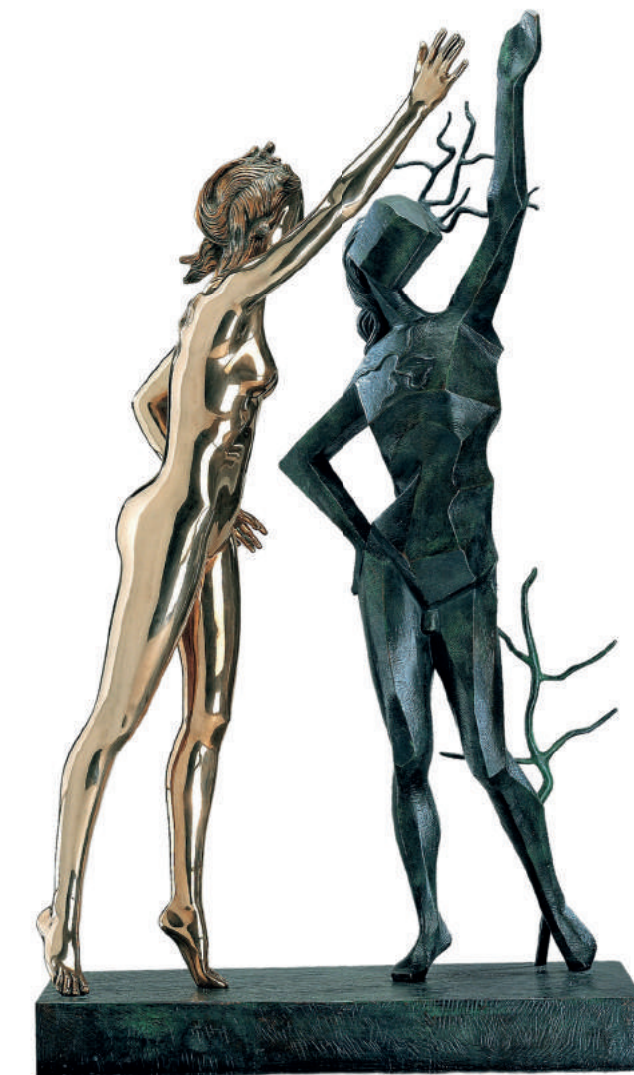
LIMITED EDITION

**DETAILS**  
**Year:** conceived in 1977,  
 first cast in 1984  
**Height:** 70,5 cm  
**Material:** bronze  
**Technique:** lost-wax  
**Edition Size:** 350+35 EA



MONUMENTAL EDITION

**DETAILS**  
**Year:** conceived in 1977,  
 first cast in 1984  
**Height:** 375 cm  
**Material:** bronze  
**Technique:** lost-wax  
**Edition Size:** 8 plus 4 EA



MUSEUM EDITION

**DETAILS**  
**Year:** conceived in 1977,  
 first cast in 1984  
**Height:** 187 cm  
**Material:** bronze  
**Technique:** lost-wax  
**Edition Size:** 7 plus 3 EA, 2 HC  
 (plus 2 authorized foundry proofs)

# HOMAGE TO TERPSICHOE



# HOMAGE TO FASHION



LIMITED EDITION

## DETAILS

**Year:** conceived in 1968,  
first cast in 1984  
**Height:** 51 cm  
**Material:** bronze  
**Technique:** lost-wax  
**Edition Size:** 350+35 EA



MUSEUM EDITION

## DETAILS

**Year:** conceived in 1971,  
first cast in 1984  
**Height:** 179 cm  
**Material:** bronze  
**Technique:** lost-wax  
**Edition Size:** 8 plus 4 EA  
(plus 2 authorized foundry proofs)



LIMITED EDITION

## DETAILS

**Year:** conceived and  
first cast in 1980  
**Height:** 37 cm  
**Material:** bronze  
**Technique:** lost-wax  
**Edition Size:** 350+35 EA

# PERSISTENCE OF MEMORY



MONUMENTAL EDITION

## DETAILS

**Year:** conceived and  
first cast in 1980  
**Height:** 500 cm  
**Material:** bronze  
**Technique:** lost-wax  
**Edition Size:** 8 plus 4 EA





# HORSE SADDLED WITH TIME



MONUMENTAL EDITION

## DETAILS

**Year:** conceived and first cast in 1980  
**Height:** 300 cm  
**Material:** bronze  
**Technique:** lost-wax  
**Edition Size:** 8 plus 4 EA

MUSEUM EDITION



## DETAILS

**Year:** conceived and first cast in 1980  
**Height:** 141 cm  
**Material:** bronze  
**Technique:** lost-wax  
**Edition Size:** 8 plus 4 EA



## LIMITED EDITION



**DETAILS**  
**Year:** conceived in 1977,  
first cast in 1984  
**Height:** 57 cm  
**Material:** bronze  
**Technique:** lost-wax  
**Edition Size:** 350+35 EA



**DETAILS**  
**Year:** conceived in 1977,  
first cast in 1984  
**Height:** 366 cm  
**Material:** bronze  
**Technique:** lost-wax  
**Edition Size:** 8 plus 4 EA

## MUSEUM EDITION

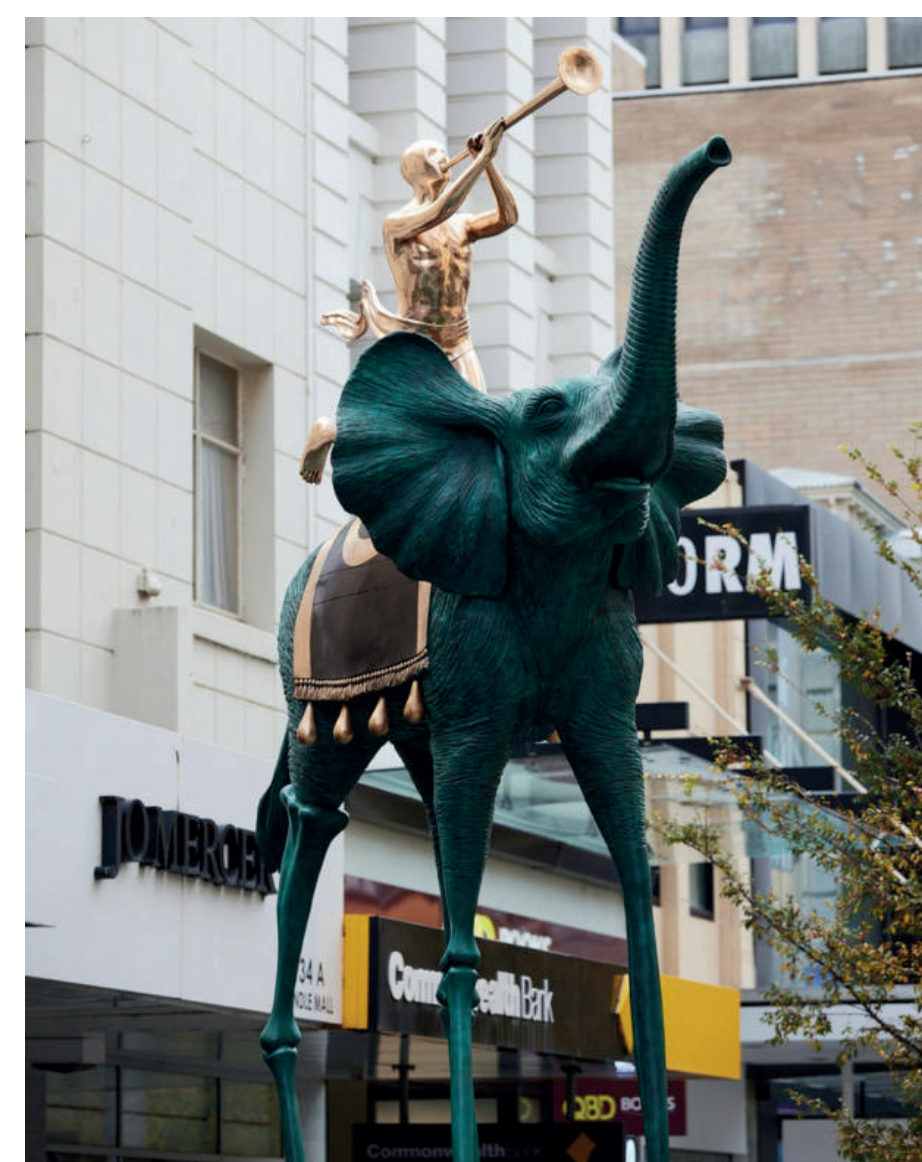


**DETAILS**  
**Year:** conceived in 1977,  
first cast in 1984  
**Height:** 183 cm  
**Material:** bronze  
**Technique:** lost-wax  
**Edition Size:** 7 plus 3 EA, 2 HC (plus 2 authorized foundry proofs)

# UNICORN

# TRIUMPHANT ELEPHANT

## MONUMENTAL EDITION



**DETAILS**  
**Year:** conceived in 1975,  
first cast in 1984  
**Height:** 574 cm  
**Material:** bronze  
**Technique:** lost-wax  
**Edition Size:** 8 plus 4 EA (plus 2 authorized foundry proofs)

## LIMITED EDITION



**DETAILS**  
**Year:** conceived in 1975,  
first cast in 1984  
**Height:** 53 cm  
**Material:** bronze  
**Technique:** lost-wax  
**Edition Size:** 350+35 EA



# SURREALIST FURNITURES

During the 1930's, Dal' developed a friendship with Jean-Michel Frank, a renowned Parisian furniture-maker and decorator of the time. Together they collaborated on several ideas, transforming everyday practical objects into ones of indeterminate use. The culmination of which was a Surreal Room which was originally laid out in the London home of Dal''s great patron, Edward James.

The famous artwork Mae West Lips Sofa was constructed in Paris in 1936 for the first time, under Dal''s supervision, based on his original sketch.

The upholstery fabric was in Elsa Schiapparelli's "shocking pink".

Such is the popularity of this piece of furniture, that it has become instantly recognisable and has been copied many times since by mainstream furniture-makers.



## BRACELLI LAMP

### DETAILS

**Year:** conceived in the **1930s**,  
first production in the **1990s**

**Height:** 180 cm

**Materials:** various

**Edition Size:** unlimited



## CAJONES LAMP

### DETAILS

**Year:** conceived in the **1930s**,  
first production in the **1990s**

**Height:** 87 cm

**Materials:** brass

**Edition Size:** unlimited





## LEDA ARMCHAIR



### DETAILS

**Year:** conceived in the 1930s,  
first production in the 1990s

**Height:** 92 cm

**Materials:** brass

**Edition Size:** unlimited

## LEDA LOW TABLE

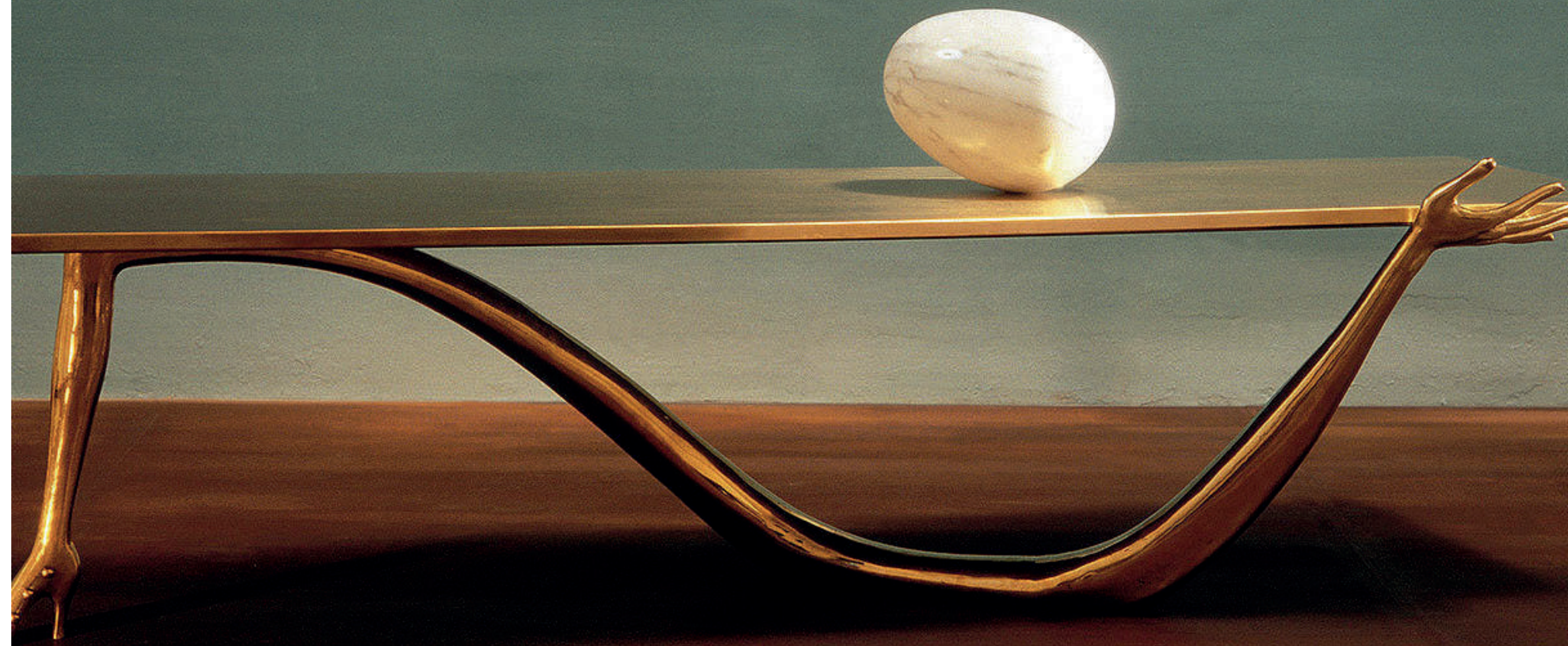
### DETAILS

**Year:** conceived in the 1930s,  
first production in the 1990s

**Height:** 61 cm

**Materials:** brass and Carrara marble egg

**Edition Size:** unlimited





## MAE WEST LIPS SOFA

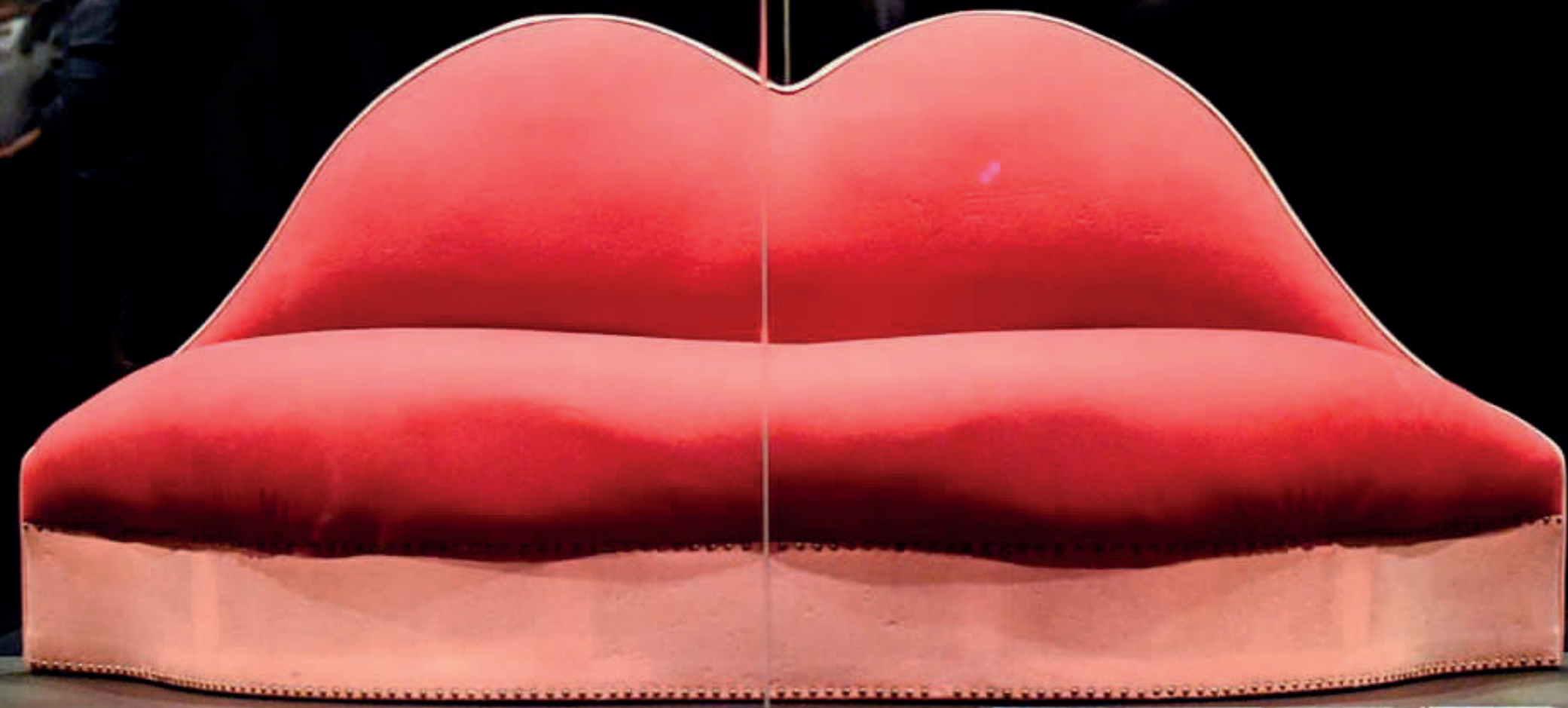
### DETAILS

**Year:** conceived in 1936,  
created in 1974

**Height:** 85 cm

**Materials:** fabric and wood

**Edition Size:** unlimited



## VIS-È-VIS SOFA



### DETAILS

**Year:** conceived in the 1930s,  
first production in the 1990s

**Height:** 180 cm

**Materials:** various

**Edition Size:** unlimited



# MULETAS LAMP

## DETAILS

**Year:** conceived in the **1930s**,  
first production in the **1990s**

**Height:** 185 cm

**Materials:** various

**Edition Size:** unlimited





# DAUM GLASS

Dal' recognised in glass the properties and the possibilities for Surrealist transformation between light and colour in threedimensional form, for this reason Dal' created his first glass objects in the 1940s

In 1968 Salvador Dal' and the prestigious French glass-making company, Daum Cristallerie had an artistic collaboration that produced One of the most interesting collections in the world of colour-glass sculpture.

This unique marriage of the foremost artist of our times and one of the most prestigious cristallerie firms brings into being a completely new dimension for viewing the most famous Dalinian images, ideas and symbols.

Sublimated to the transparency of glass, today these artworks are essential objects of Surrealism whose incontestable beauty is recognised by all.







**ANTI-FLEUR**

**DETAILS**  
**Year:** 1971  
**Height:** 35 cm  
**Material:** glass paste  
**Technique:** technique of glass paste and lost-wax technique  
**Edition Size:** 150

**DETAILS**  
**Year:** 1988  
**Height:** 31.5 cm  
**Material:** crystal and glass paste  
**Technique:** technique of glass paste and lost-wax technique  
**Edition Size:** 2950



**CHALICE 157**



**RHINOCEROTYPE  
CHIPPENDALE**

**DETAILS**  
**Year:** 1972  
**Height:** 34 cm  
**Material:** glass paste  
**Technique:** technique of glass paste and lost-wax technique  
**Edition Size:** 150

**DETAILS**  
**Year:** 1988  
**Height:** 20 cm  
**Material:** crystal and glass paste  
**Technique:** technique of glass paste and lost-wax technique  
**Edition Size:** unlimited



**CHALICE VERRE N:2**



**CHALICE 156**

**DETAILS**  
**Year:** 1988  
**Height:** 28 cm  
**Material:** glass paste  
**Technique:** technique of glass paste and lost-wax technique  
**Edition Size:** 2950

**DETAILS**  
**Year:** 1988  
**Height:** 28 cm  
**Material:** glass paste  
**Technique:** technique of glass paste and lost-wax technique  
**Edition Size:** 2950



**CECI N'EST PAS  
UNE ASSIETTE**



**CHALICE 158**

**DETAILS**  
**Year:** 1988  
**Height:** 21,5 cm  
**Material:** crystal and glass paste  
**Technique:** technique of glass paste and lost-wax technique  
**Edition Size:** 2950

**DETAILS**  
**Year:** 1976  
**Height:** 52 cm  
**Material:** glass paste  
**Technique:** technique of glass paste and lost-wax technique  
**Edition Size:** 150



**CROIX DE  
LEIBNIZUNE ASSIETTE**



CYCLOPE



**DETAILS**  
Year: 1968  
Height: 50 cm  
Material: glass paste  
Technique: technique of glass paste and lost-wax technique  
Edition Size: 150

**DETAILS**  
Year: 1972  
Height: 34 cm  
Material: glass paste  
Technique: technique of glass paste and lost-wax technique  
Edition Size: 150

DEBRIS  
DÔUNE  
AUTOMOBILE



FLEUR DU MAL



**DETAILS**  
Year: 1968  
Height: 37 cm  
Material: glass paste  
Technique: technique of glass paste and lost-wax technique  
Edition Size: 150

**DETAILS**  
Year: 1988  
Height: 27 cm  
Material: crystal and glass paste  
Technique: technique of glass paste and lost-wax technique  
Edition Size: unlimited

FLÔTE CHALICE N°17



**DETAILS**  
Year: 1968  
Height: 28 cm  
Material: glass paste  
Technique: technique of glass paste and lost-wax technique  
Edition Size: 150

L'IMPORANT  
C'EST LA ROSE



**DETAILS**  
Year: 1971  
Height: 60 cm  
Material: glass paste  
Technique: technique of glass paste and lost-wax technique  
Edition Size: 150

LA MAIN DIVINE



**DETAILS**  
Year: 1972  
Height: 31 cm  
Material: glass paste  
Technique: technique of glass paste and lost-wax technique  
Edition Size: 150

GUITAR



LE DÉSIR HYPERRATIONNEL





MATERNITY



**DETAILS**  
**Year:** 1969  
**Height:** 25 cm  
**Material:** glass paste  
**Technique:** technique of glass paste and lost-wax technique  
**Edition Size:** 150

**DETAILS**  
**Year:** 1978  
**Height:** 27 cm  
**Material:** glass paste  
**Technique:** technique of glass paste and lost-wax technique  
**Edition Size:** 200

OEIL DE PÂQUES



**DETAILS**  
**Year:** 1988  
**Height:** 54 cm  
**Material:** glass paste  
**Technique:** technique of glass paste and lost-wax technique  
**Edition Size:** 850

BANDE DE MOEBIUS



**DETAILS**  
**Year:** 1971  
**Height:** 15 cm  
**Material:** glass paste  
**Technique:** technique of glass paste and lost-wax technique  
**Edition Size:** 150

MONTRE MOLLE



**DETAILS**  
**Year:** 1973  
**Height:** 36 cm  
**Material:** glass paste  
**Technique:** technique of glass paste and lost-wax technique  
**Edition Size:** 250

PEGASE



**DETAILS**  
**Year:** 1971  
**Height:** 45 cm  
**Material:** glass paste  
**Technique:** technique of glass paste and lost-wax technique  
**Edition Size:** 150

PORTEMANTEAU-MONTRE



POISSON  
MALEBRANCHE



**DETAILS**  
**Year:** 1973  
**Height:** 41 cm  
**Material:** glass paste  
**Technique:** technique of glass paste and lost-wax technique  
**Edition Size:** 150

**DETAILS**  
**Year:** 1980  
**Height:** 47 cm  
**Material:** glass paste  
**Technique:** technique of glass paste and lost-wax technique  
**Edition Size:** 300

PHONOGRAPHE ANTEDILUVIEN





VERT D'ÔESPAGNE



**DETAILS**  
**Year:** 1976  
**Height:** 34 cm  
**Material:** glass paste  
**Technique:** technique of glass paste and lost-wax technique  
**Edition Size:** 200

**DETAILS**  
**Year:** 1983  
**Height:** 36 cm  
**Material:** glass paste  
**Technique:** technique of glass paste and lost-wax technique  
**Edition Size:** 300

OEIL DE PÂQUES



MONTRE MOLLE



**DETAILS**  
**Year:** 1970  
**Height:** 26 cm  
**Material:** glass paste  
**Technique:** technique of glass paste and lost-wax technique  
**Edition Size:** 2000

BANDE DE MOEBIUS



**DETAILS**  
**Year:** 1988  
**Height:** 43 cm  
**Material:** glass paste  
**Technique:** technique of glass paste and lost-wax technique  
**Edition Size:** 850





# GRAPHIC ARTWORKS

Dal' worked extensively in the graphic arts,  
producing many drawings, illustrations, etchings, and lithographs, touching the most varied themes and concepts .

120  
anniversary





**ALICE IN  
WONDERLAND**



**APOLLON**



**DANCE OF TIME**



**CHEVAL DE  
TRIOMPHE**

**DREAM CAUSED BY  
THE FLIGHT OF A BEE  
AROUND A POMEGRANATE  
A SECOND BEFORE AWAKENING**





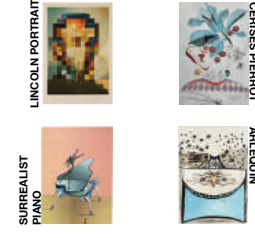
**MfDITATION  
OROGfNIQUEFROM  
PANSY**



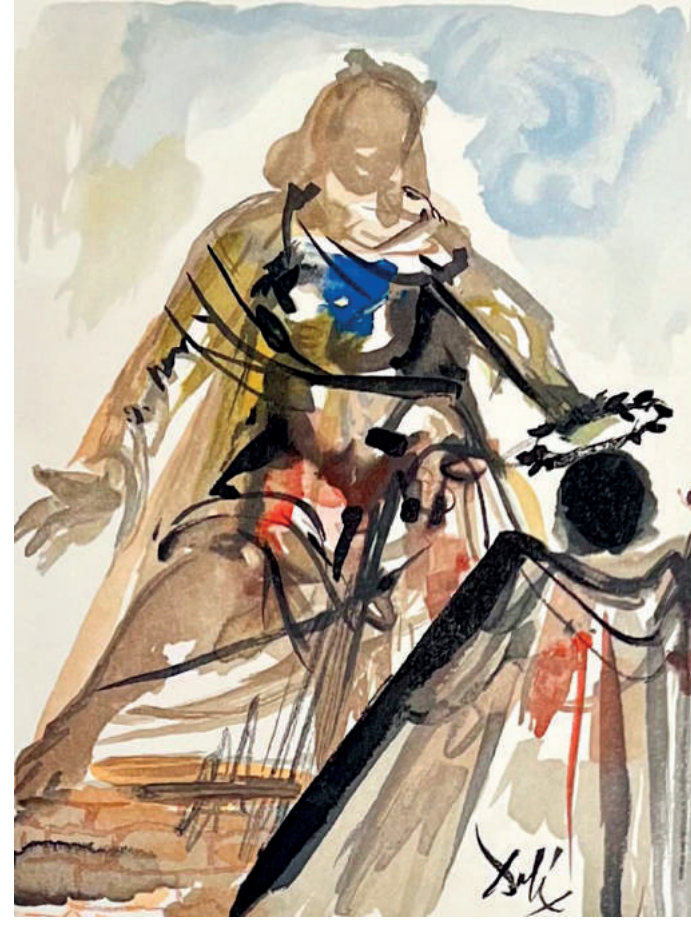
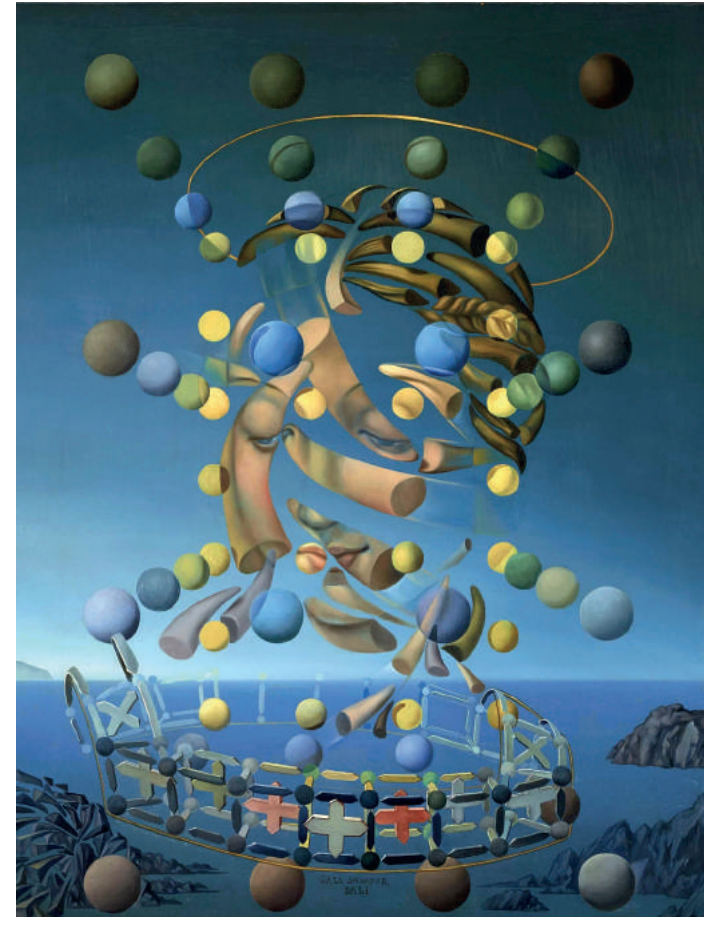
**LÖfCHARPE**



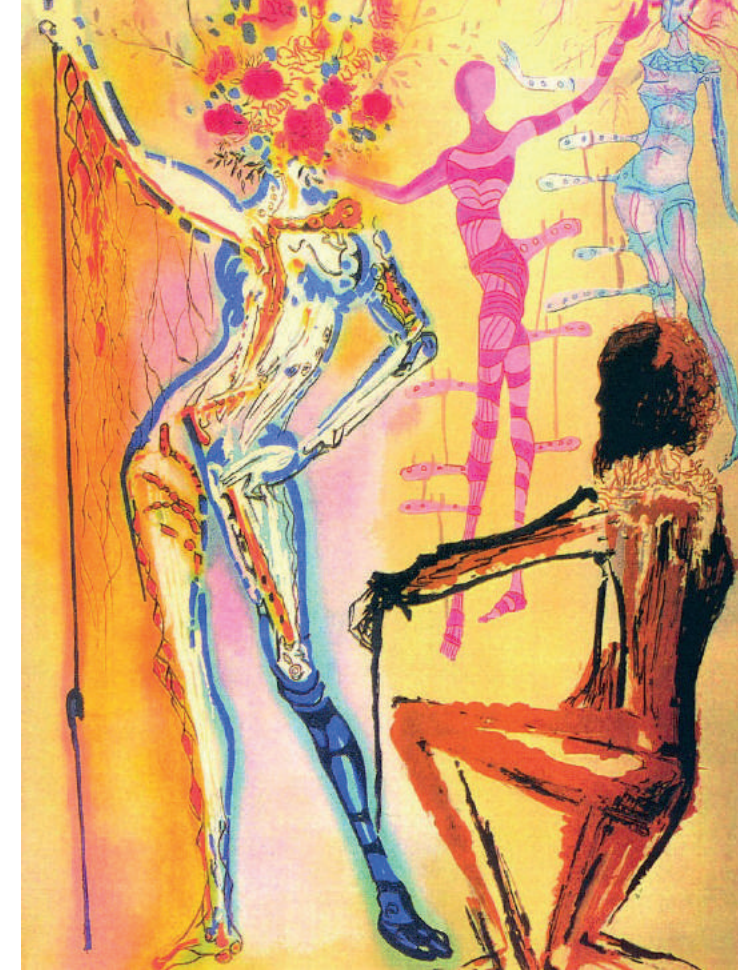
**LADY GODIVA  
WITH BUTTERFLIES**



**MADONE DE  
RAPHAEL**



**ON VOIT CETTE  
REINE**



**HOMAGE TO  
FASHION**

**THE MADONNA  
OF PORT LLIGAT**



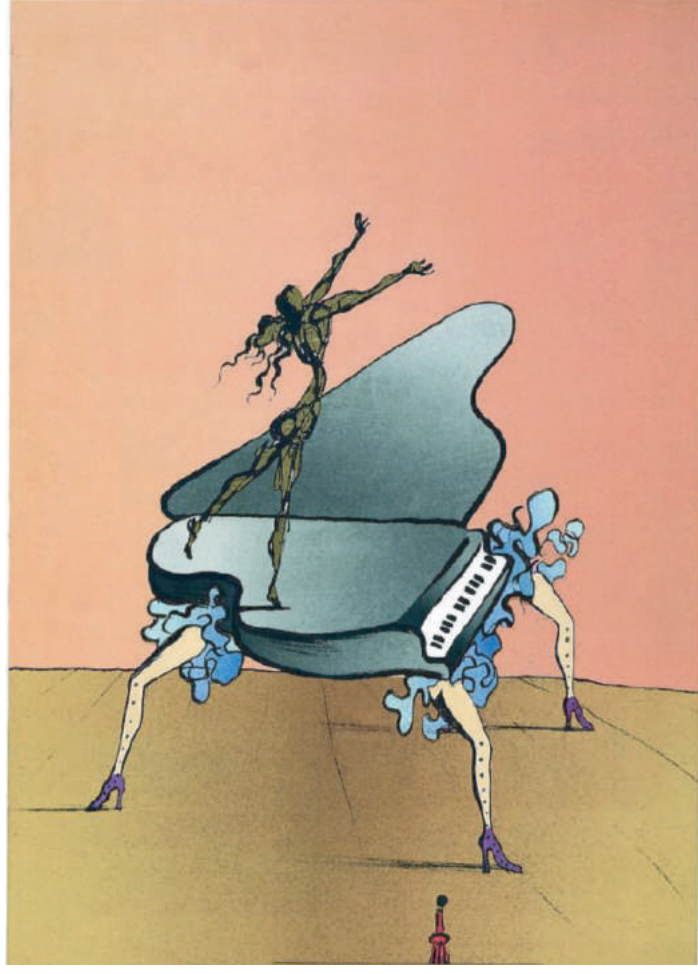
**MUCHO HAY QUE  
EXISTENCIALIZAR**



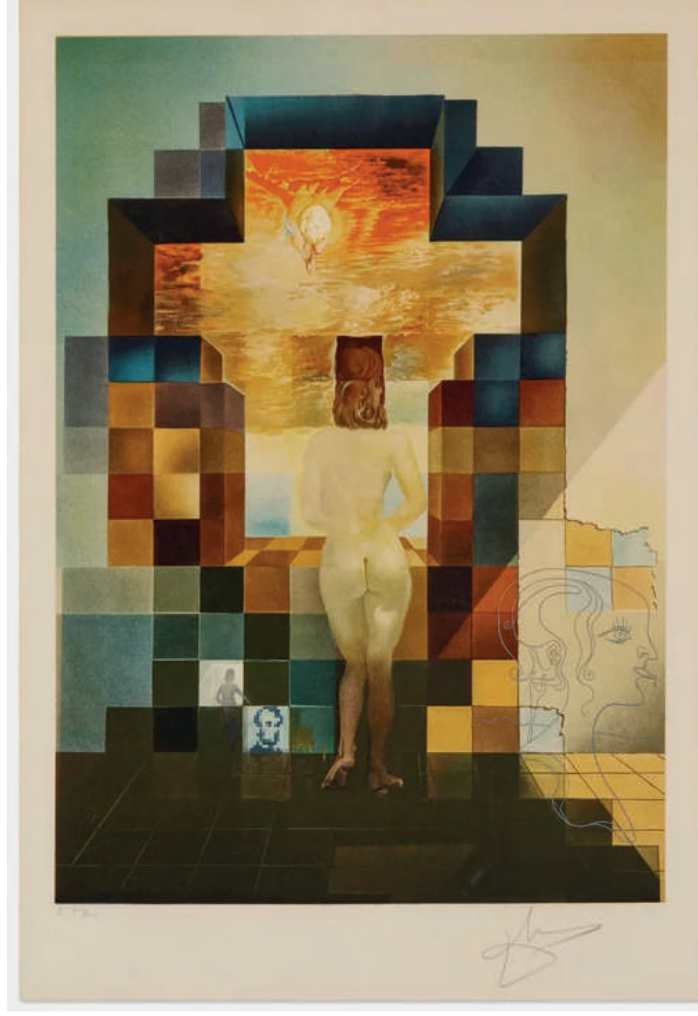
# FLORDALÍ I



# SURREALIST PIANO



# LINCOLN PORTRAIT



# ARLEQUIN



# CERISES PIERROT





**PASSIFLORA  
LAURIGERA**



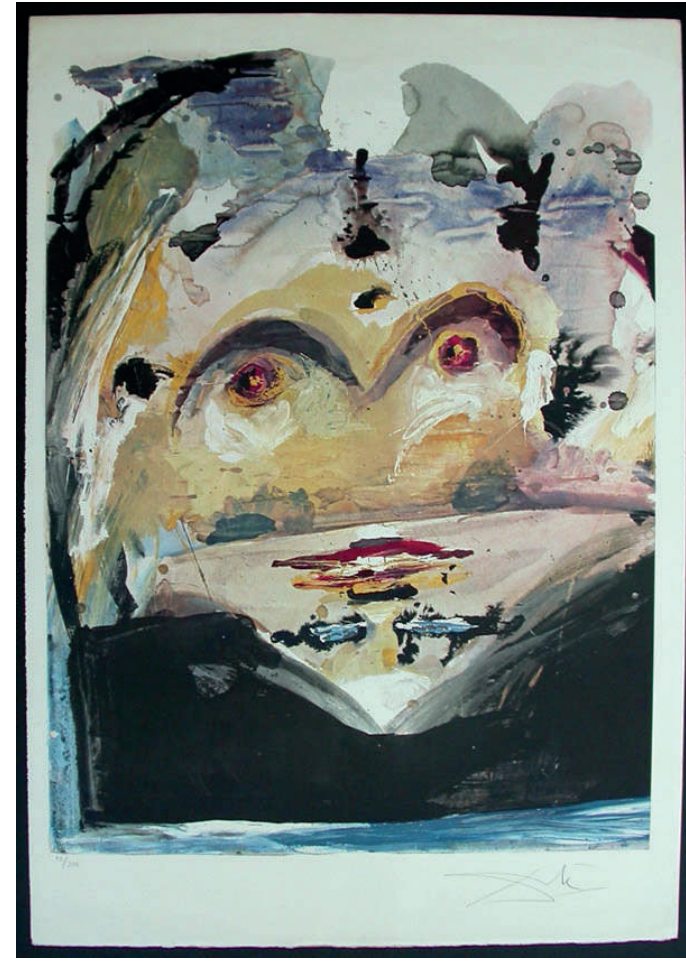
**SAINT MARTIN**



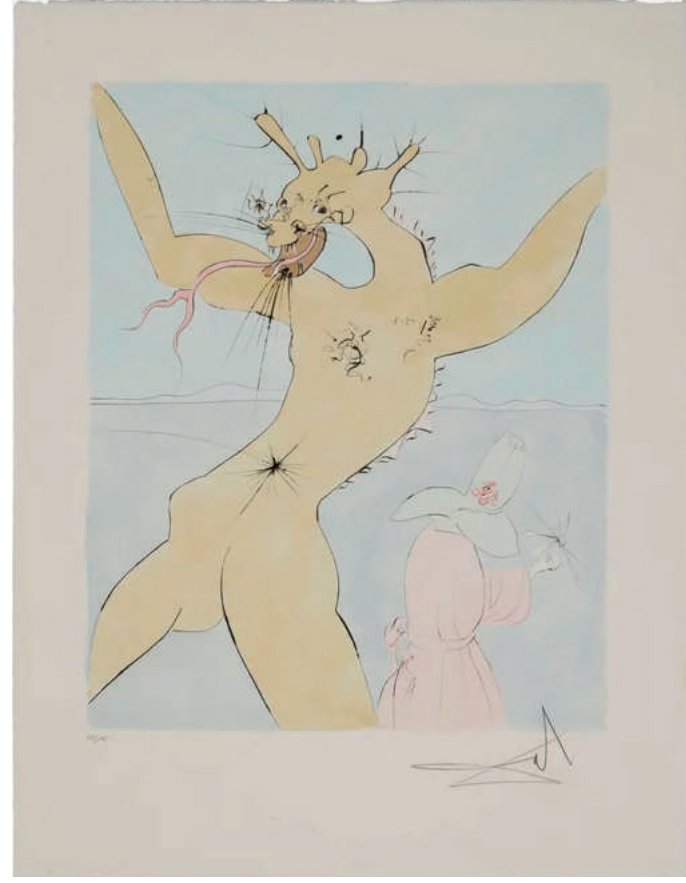
**LYS**



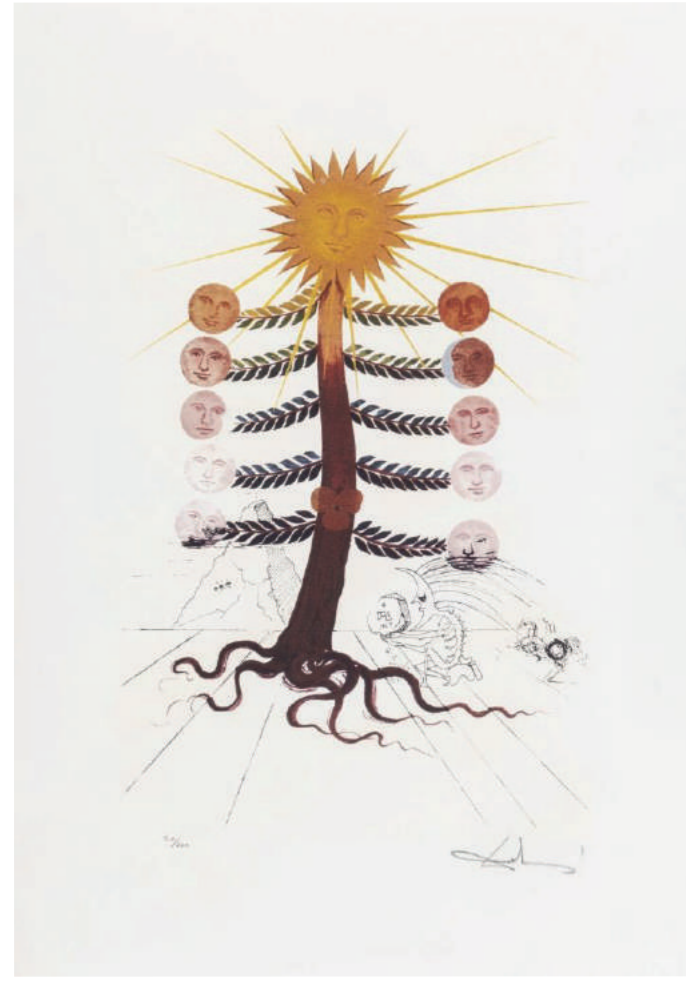
**UN**



**LITTLE ONE INCH**



**LUNA GEMINATA**



**LE CRANE**



**LILLAS PASTIAOÏS  
TAVERN**

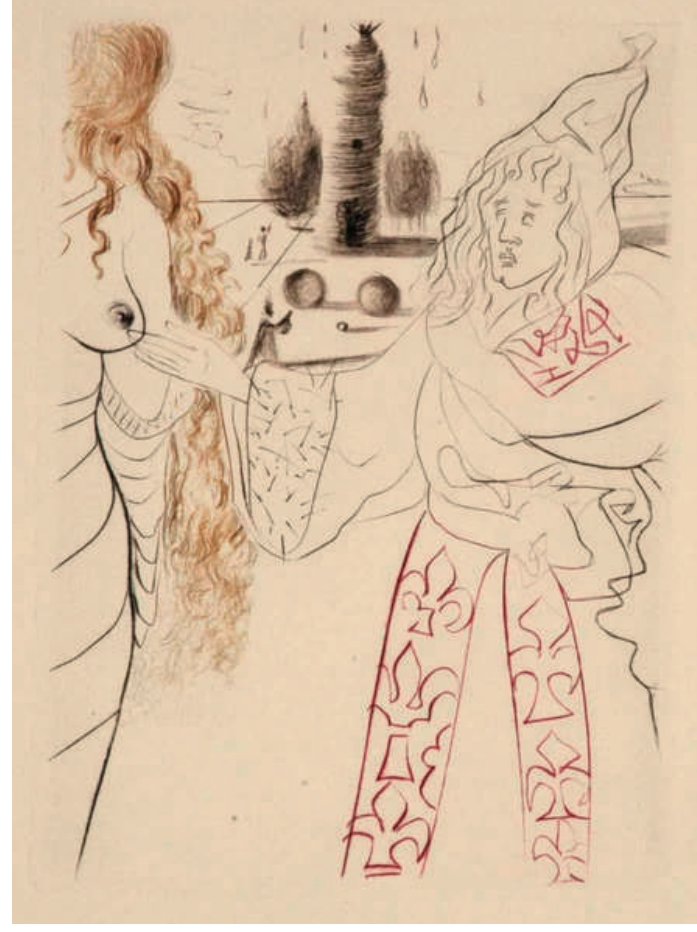




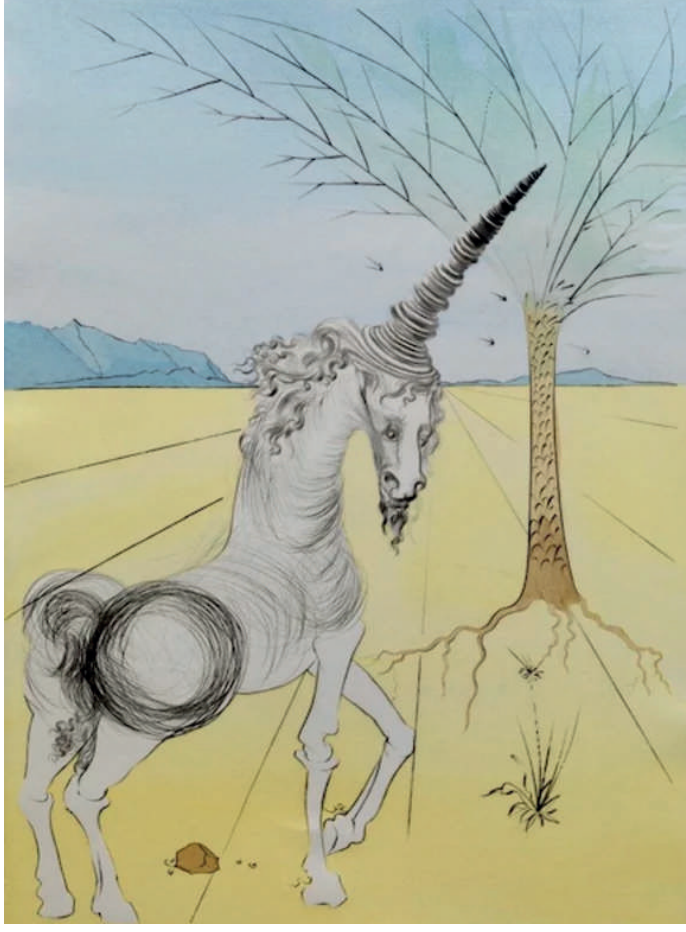
**LE CHARMEUR  
DE RATS**



**LA FEMME  
ADULTERE**

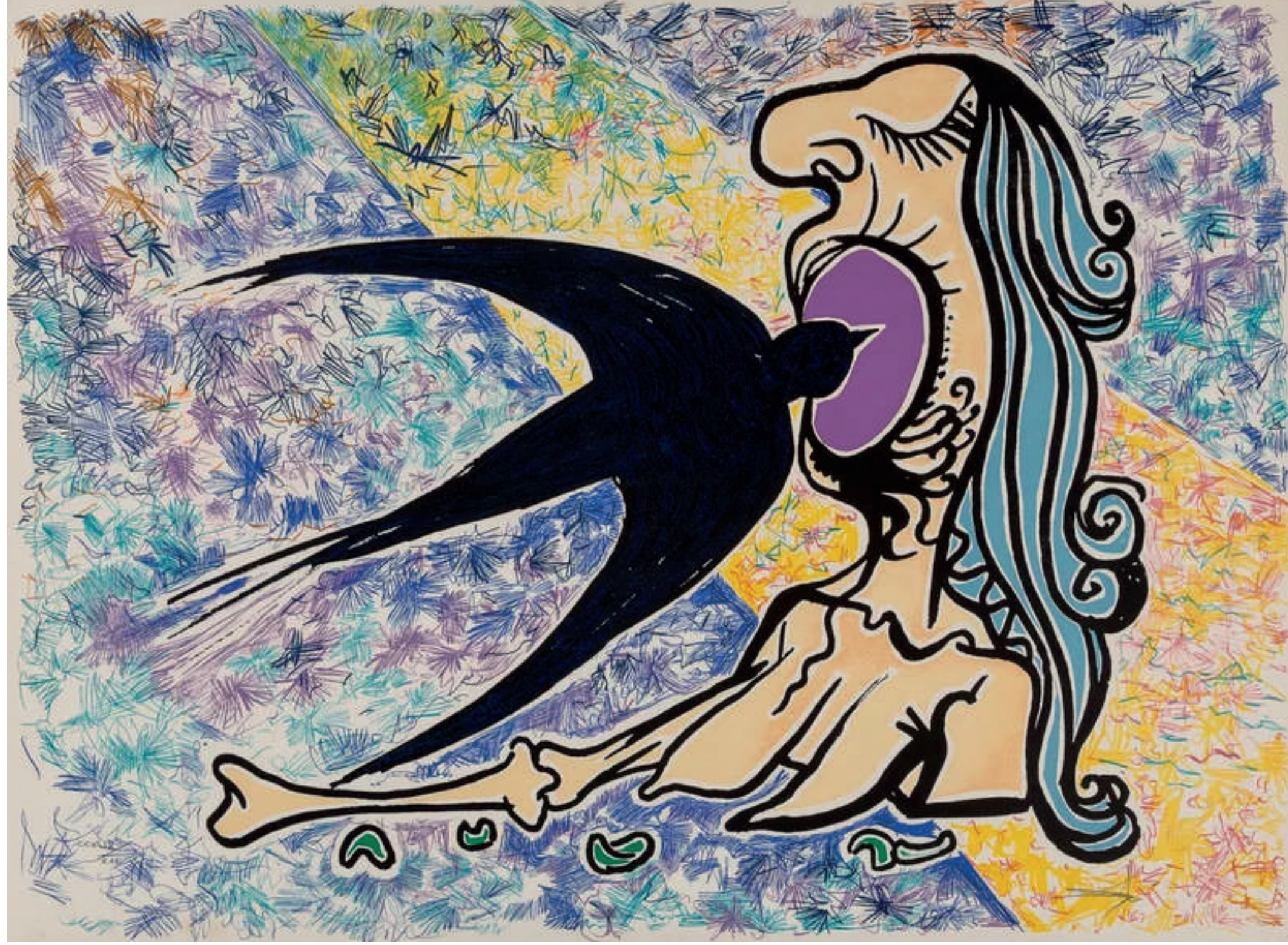


**SATURNIENNE  
LA GIRAFE**



**JOSEPH**

**LÕHIRONDELLE**





**HOMME  
FIGUIER**



**DON QUIXOTE  
AND SANCHO**



**FLOLDALÍ II**



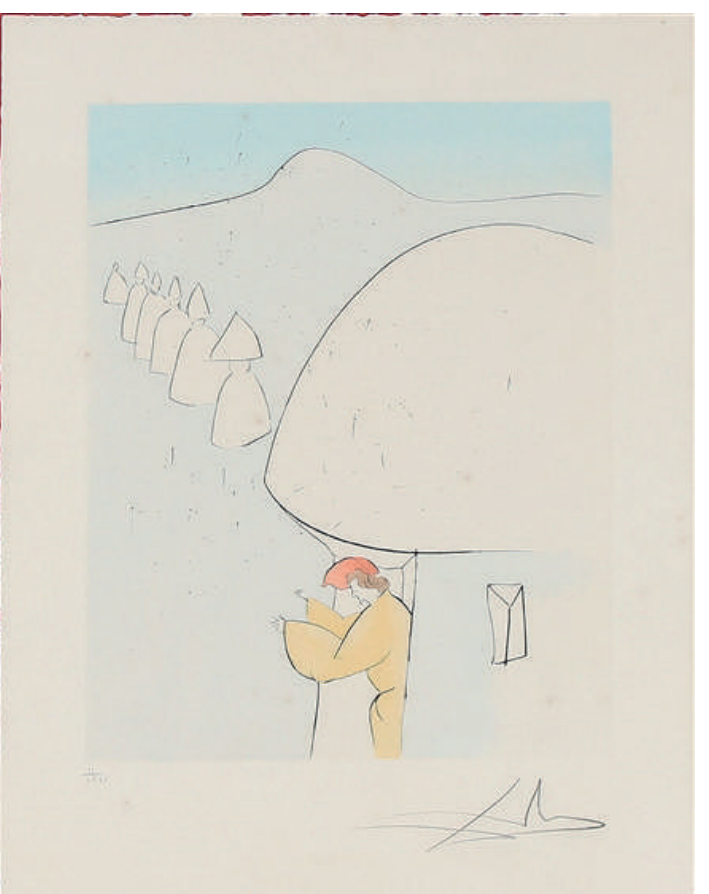
**THE DIVINE  
COMEDY HELL**



**AYSAGE FOSSILE  
IMAGINAIRE FROM  
THE MOON**



**THE GRATEFUL  
STATUES**



**ON VOIT CETTE  
REINE**



**THE SICK STAG**





# NAPOLEON'S NOSE

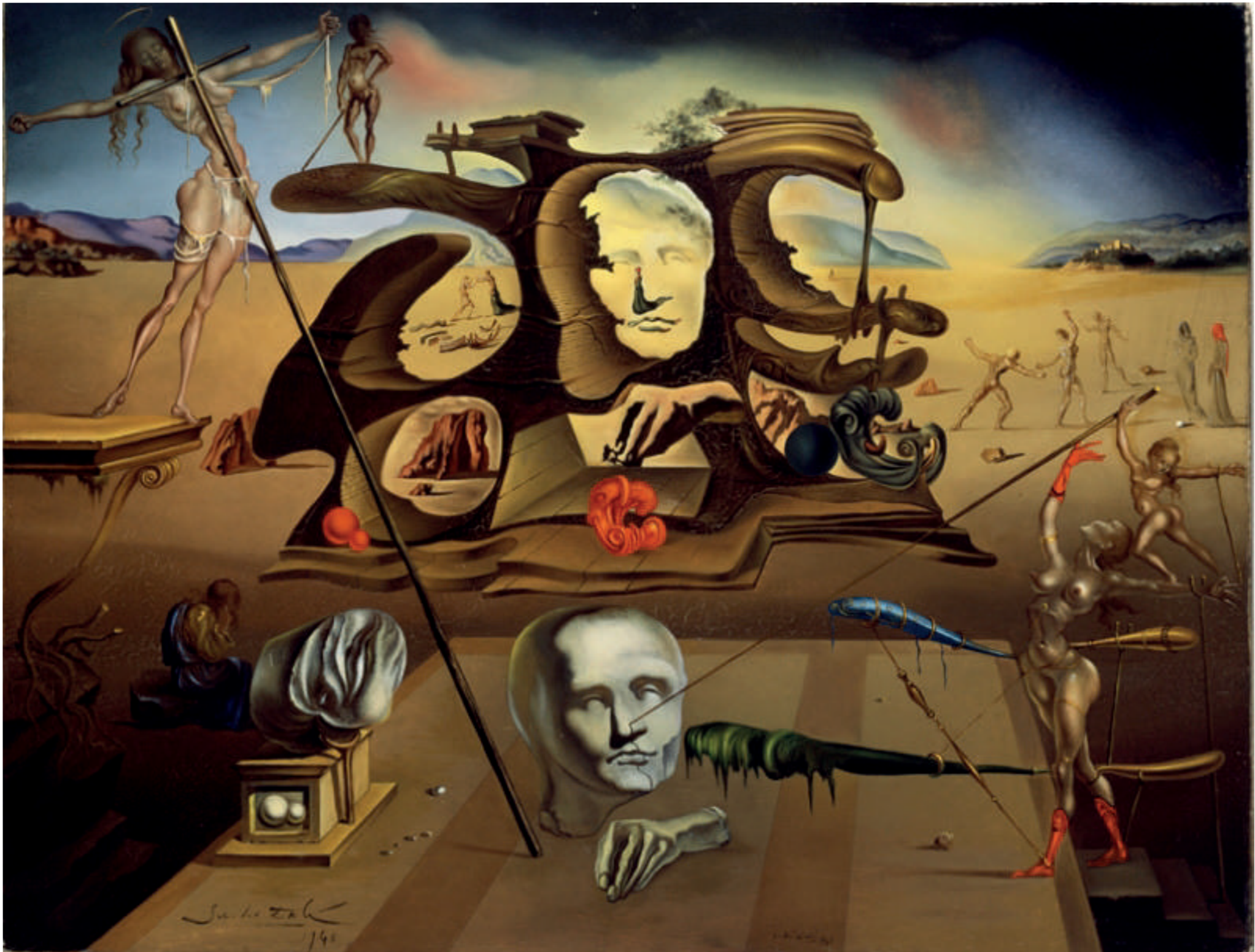


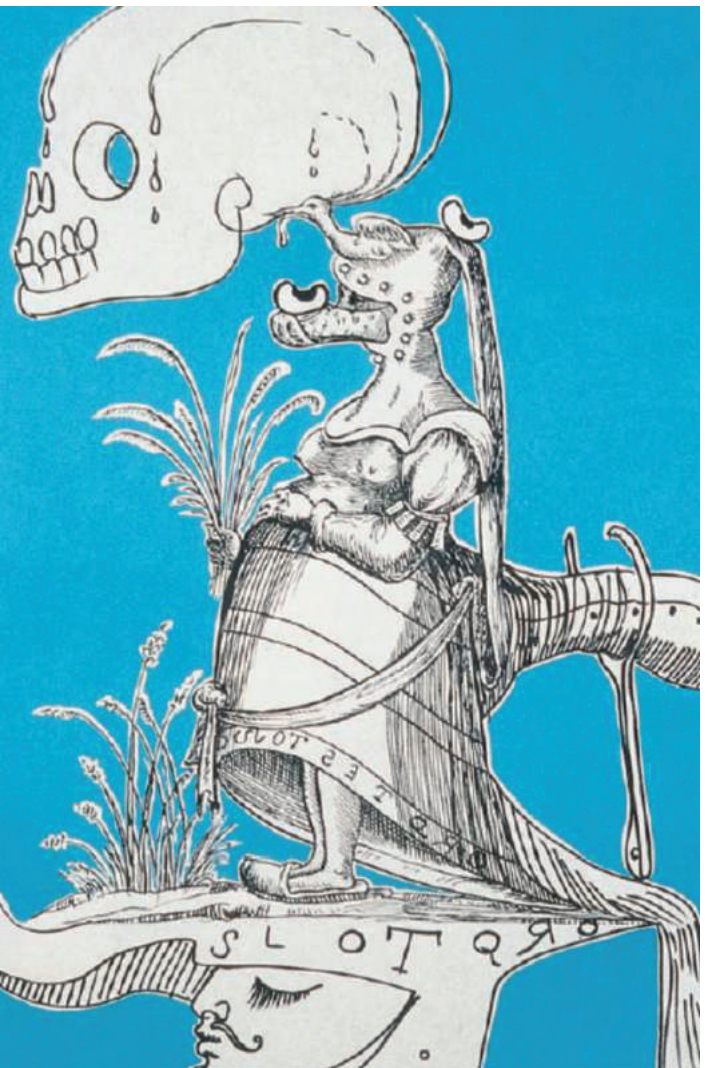
FIGURE AU GRAND  
MASTURBATEUR



THE TREE OF  
KNOWLEDGE



HEAUME DE LA  
NAISSANCE ET DE LA MORT



CFRfMONIAL  
DÔHOMMAGE È LA JAMB





# ILLUSTRATED BOOKS

Book illustrations were an important part of Dalí's work throughout his career.

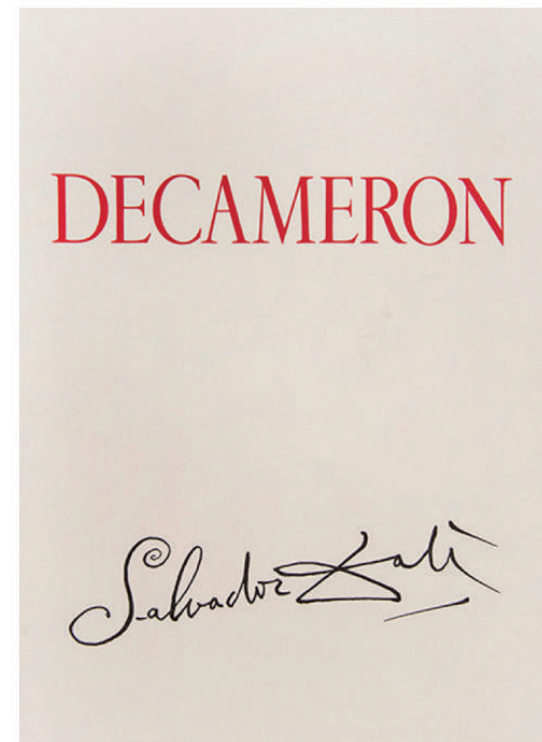
Dalí undertook the enormous task of illustrating the great themes in an expressly Surrealistic.

These fascinating works illustrate many books of international literature.

Mythology, religion, history, "surrealistic future visions" inspired Dalí to create a vast repertoire of images and allegories with which to tell the stories.

120  
anniversary

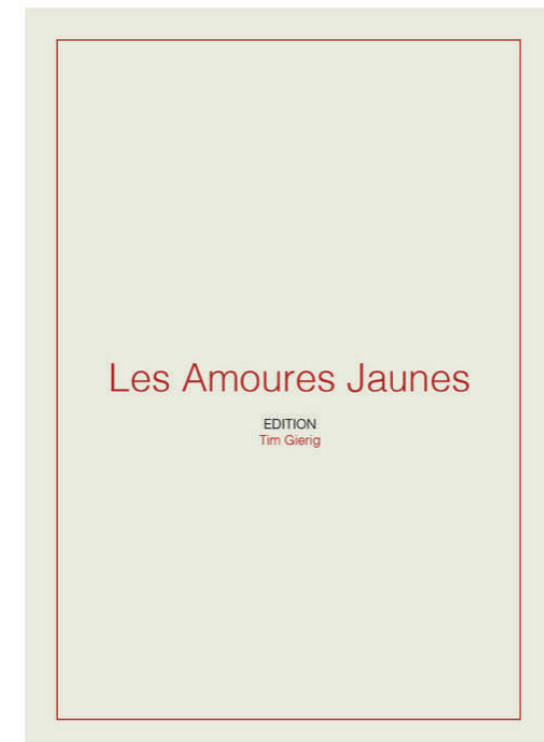




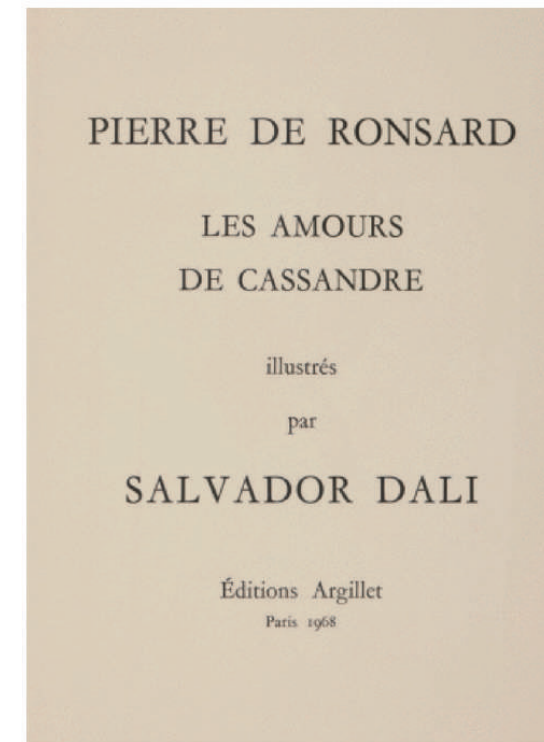
ILLUSTRATED BOOKS  
LE DECAMERON



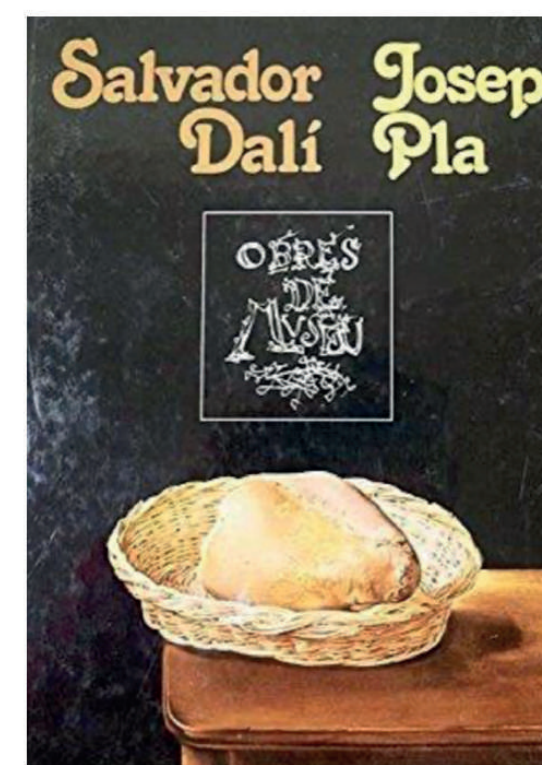
ILLUSTRATED BOOKS  
LE PARADIS TERRESTRE



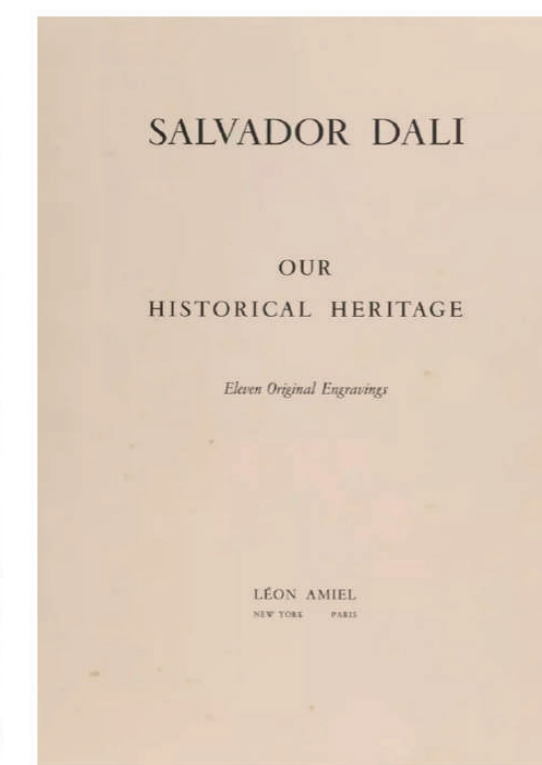
ILLUSTRATED BOOKS  
LES AMOURES JAUNES



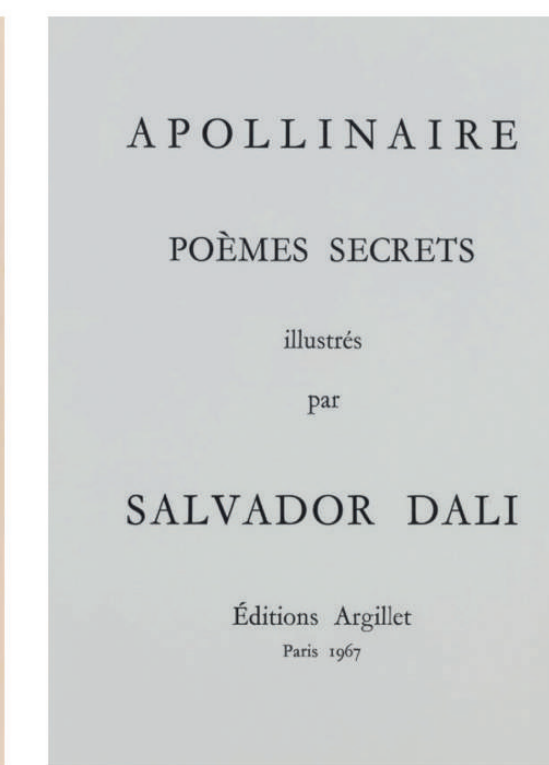
ILLUSTRATED BOOKS  
LES AMOURS DE CASSANDRE



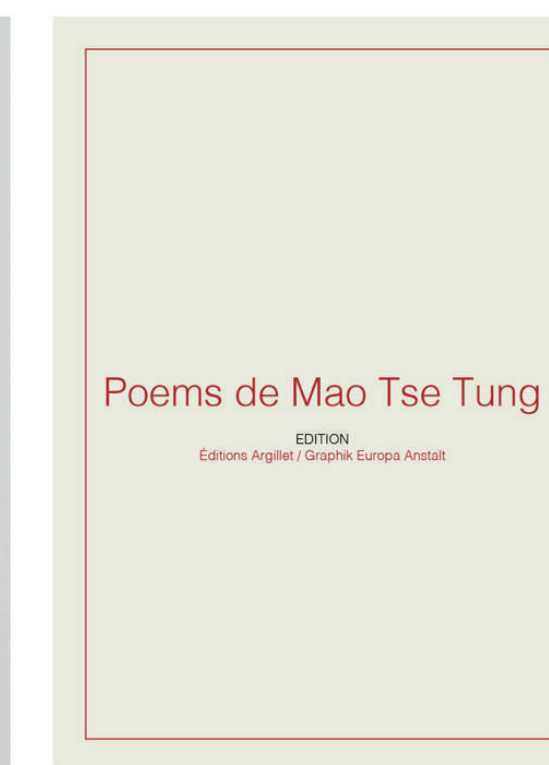
ILLUSTRATED BOOKS  
OBRES DE MUSEU



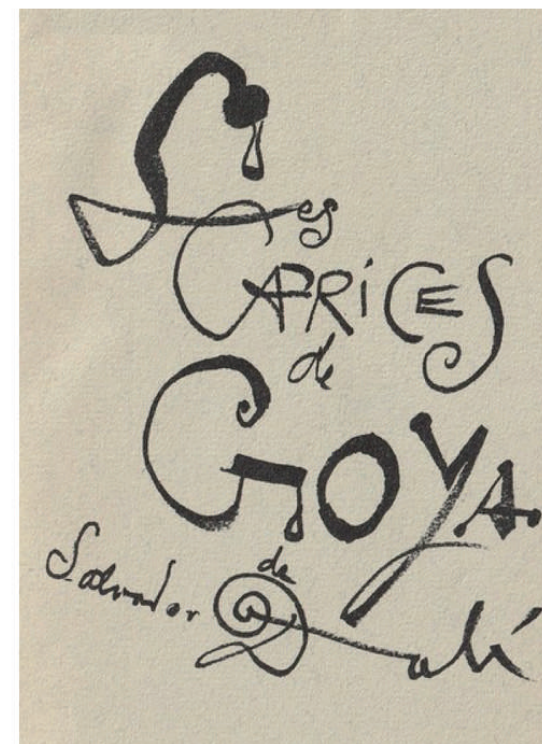
ILLUSTRATED BOOKS  
OUR HISTORICAL HERITAGE



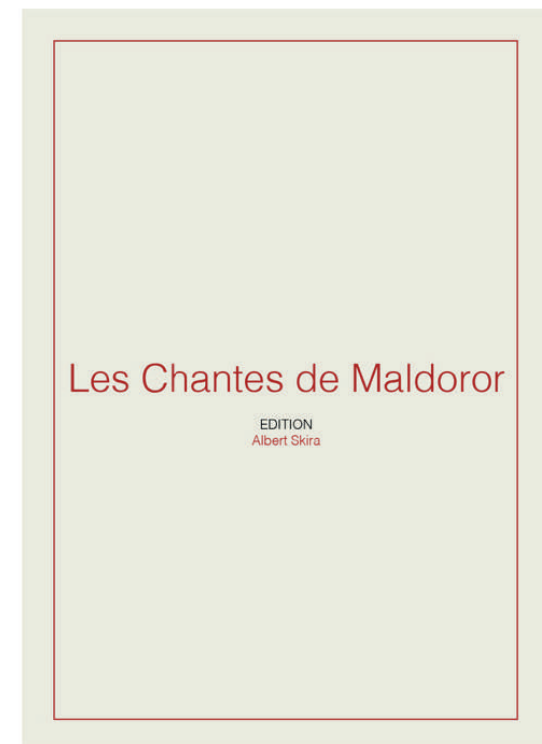
ILLUSTRATED BOOKS  
POEMES SECRETES



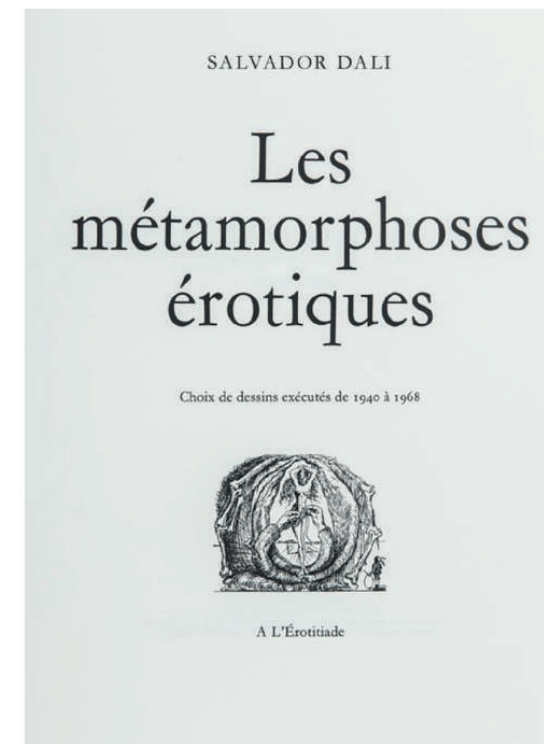
ILLUSTRATED BOOKS  
POEMS DE MAO TSE TUNG



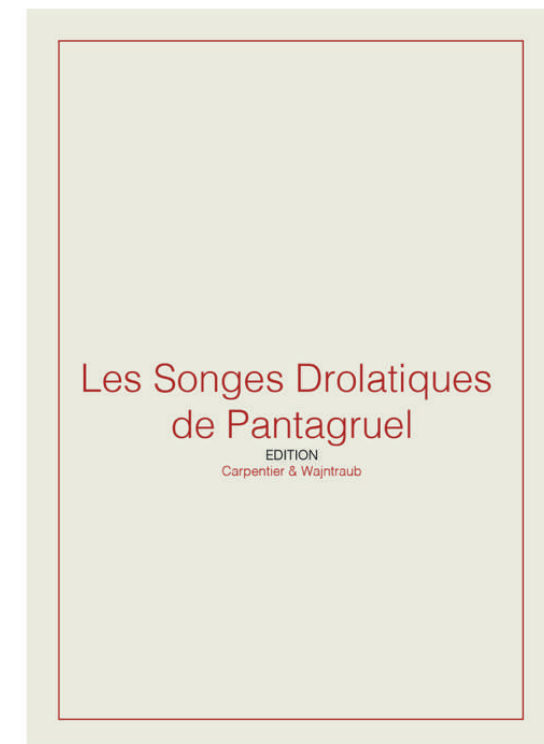
ILLUSTRATED BOOKS  
LES CAPRICES DE GOYA



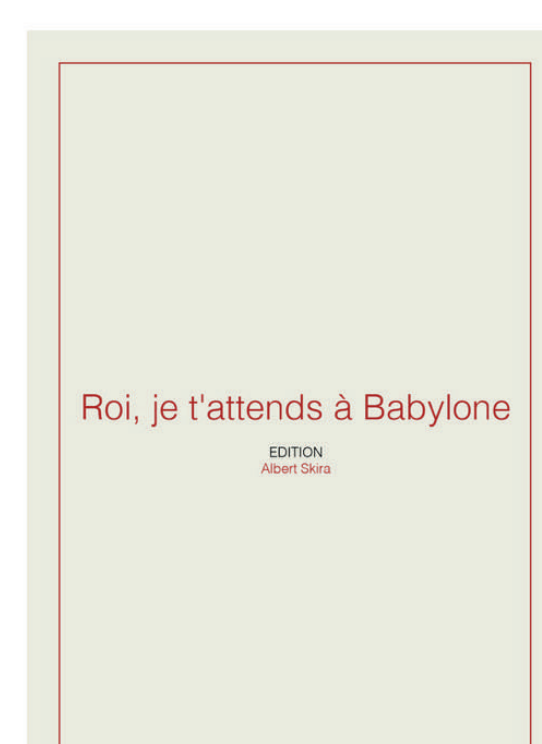
ILLUSTRATED BOOKS  
LES CHANTES DE MALDOROR



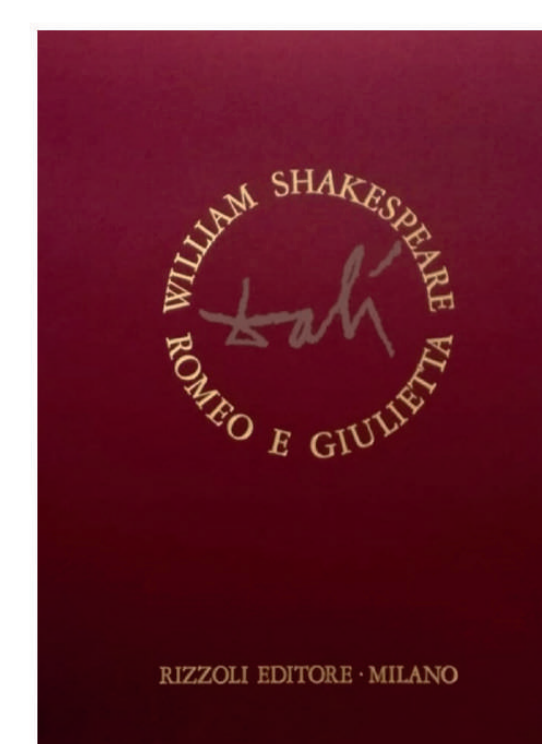
ILLUSTRATED BOOKS  
LES METAMORPHOSES ÉROTIQUES



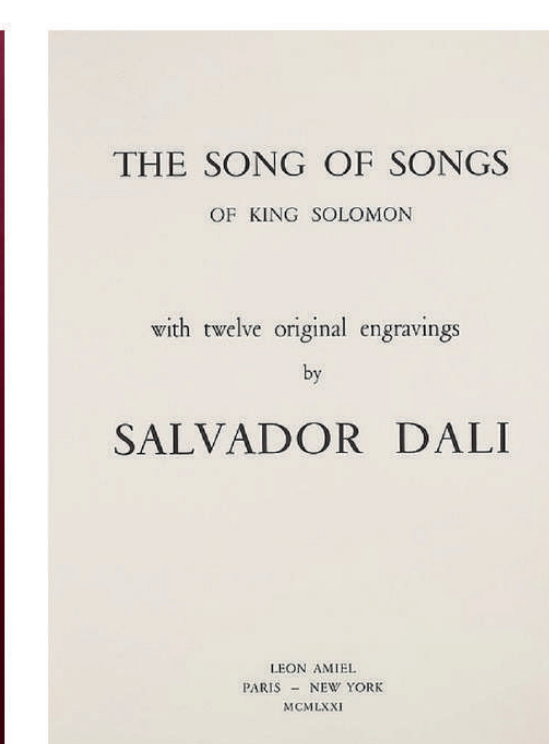
ILLUSTRATED BOOKS  
LES SONGES DROLATIQUES DE PANTAGRUEL



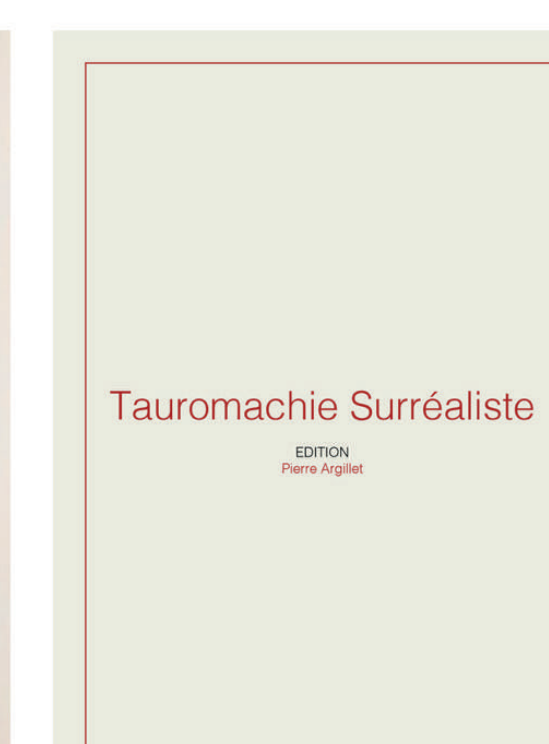
ILLUSTRATED BOOKS  
ROI, JE T'ATTENDS À BABYLONE



ILLUSTRATED BOOKS  
ROMEO AND JULIET

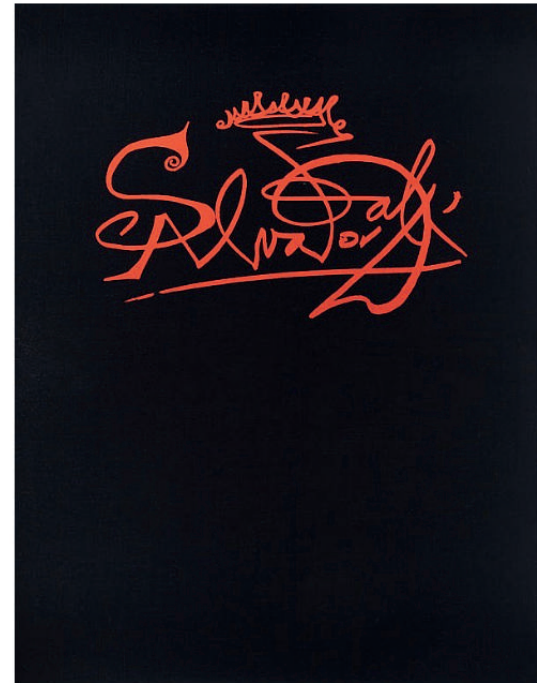


ILLUSTRATED BOOKS  
SONG OF SONGS OF SOLOMON

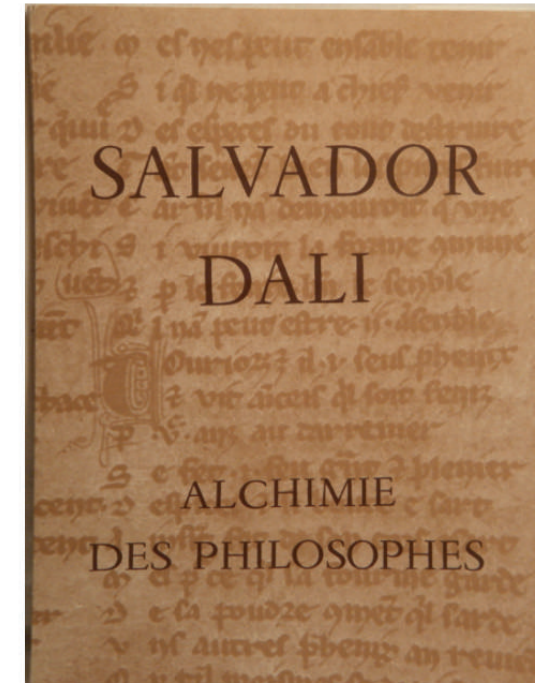


ILLUSTRATED BOOKS  
TAUROMACHIE SURREALISTE

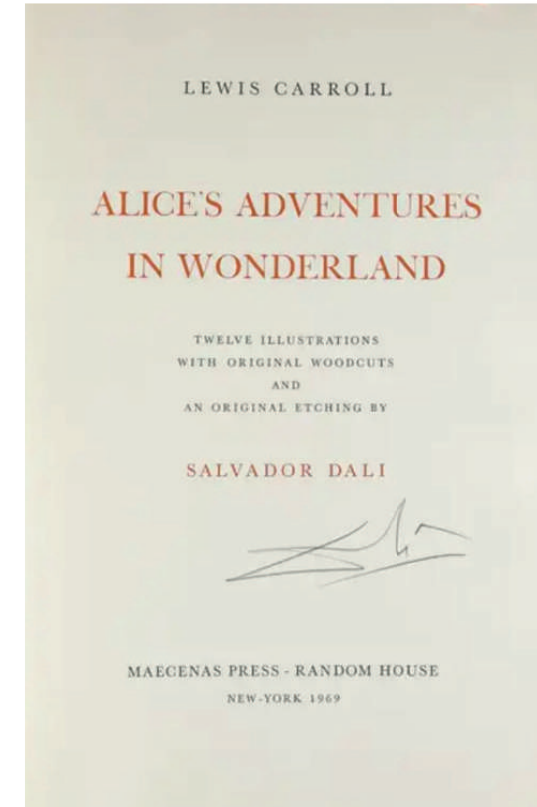




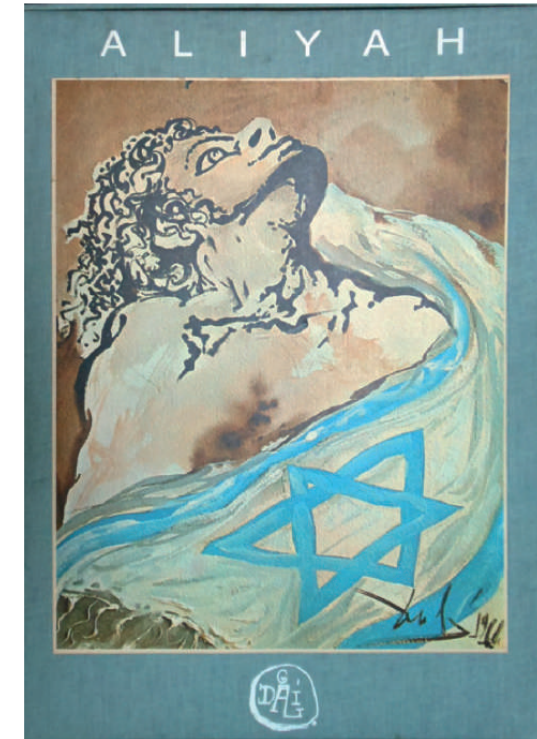
ILLUSTRATED BOOKS  
AFTER 50 YEARS OF SURREALISM



ILLUSTRATED BOOKS  
ALCHEMY DES PHILOSOPHES



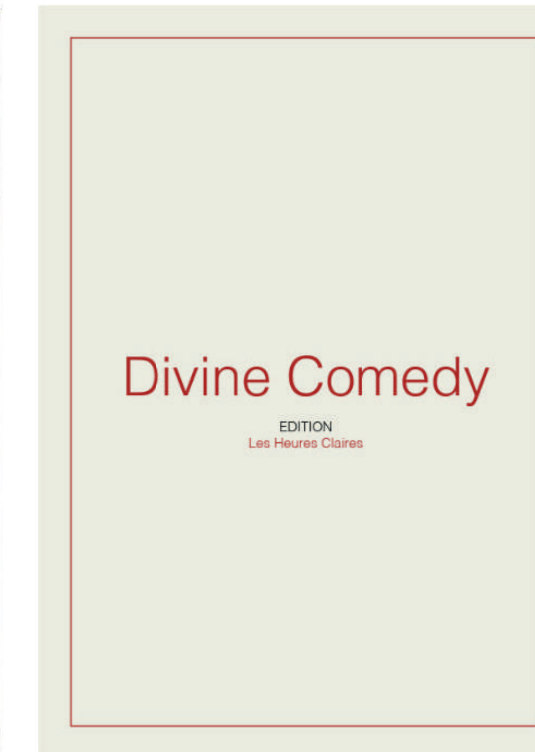
ILLUSTRATED BOOKS  
ALICE IN WONDERLAND



ILLUSTRATED BOOKS  
ALIIAH



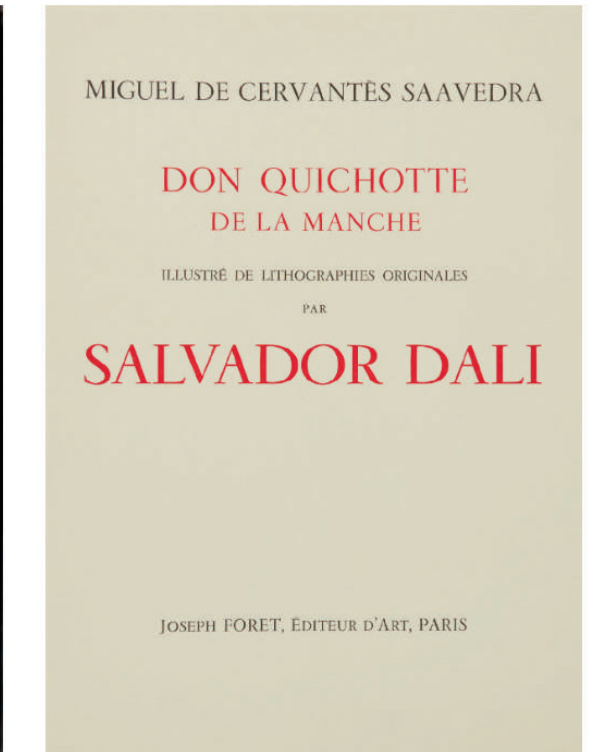
ILLUSTRATED BOOKS  
DALINIAN HORSE



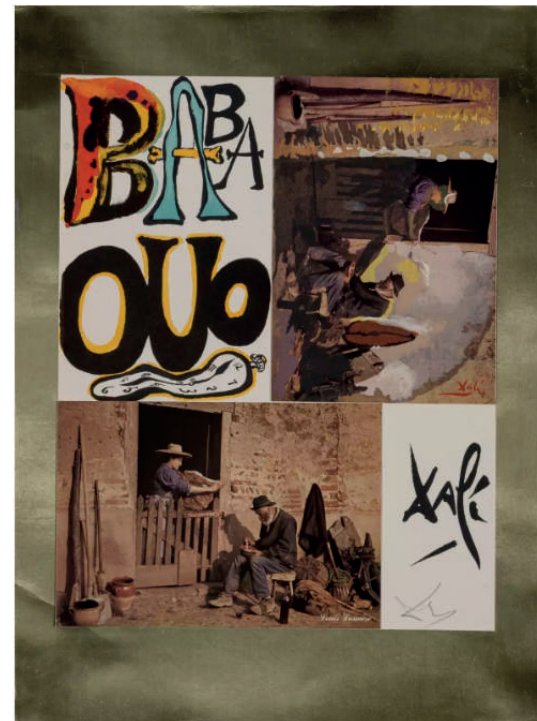
ILLUSTRATED BOOKS  
DIVINE COMEDY



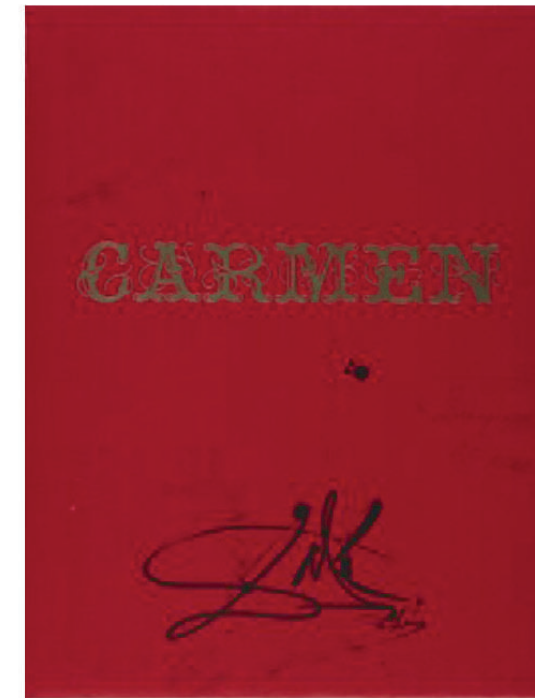
ILLUSTRATED BOOKS  
DIX RICETTES D'IMMORTALITÉ



ILLUSTRATED BOOKS  
DON QUIXOTE DE LA MANCHA



ILLUSTRATED BOOKS  
BABAOUO



ILLUSTRATED BOOKS  
CARMEN



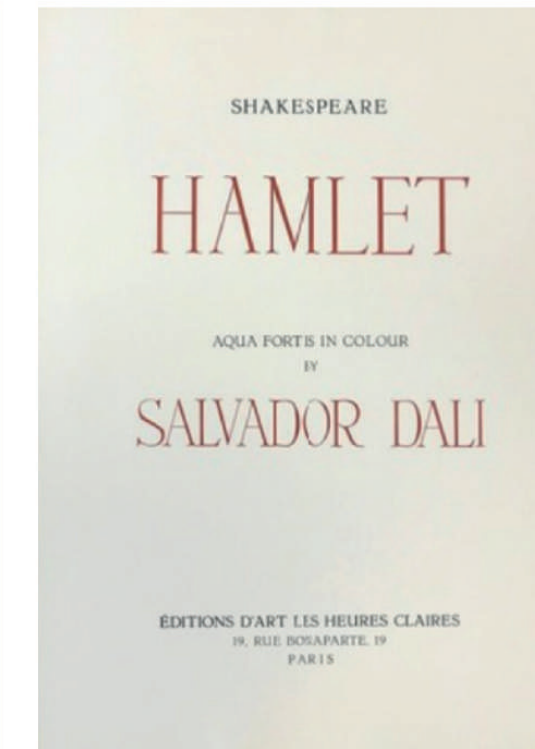
ILLUSTRATED BOOKS  
CONQUEST OF COSMOS



ILLUSTRATED BOOKS  
DALI' ILLUSTRÉ CASANOVA



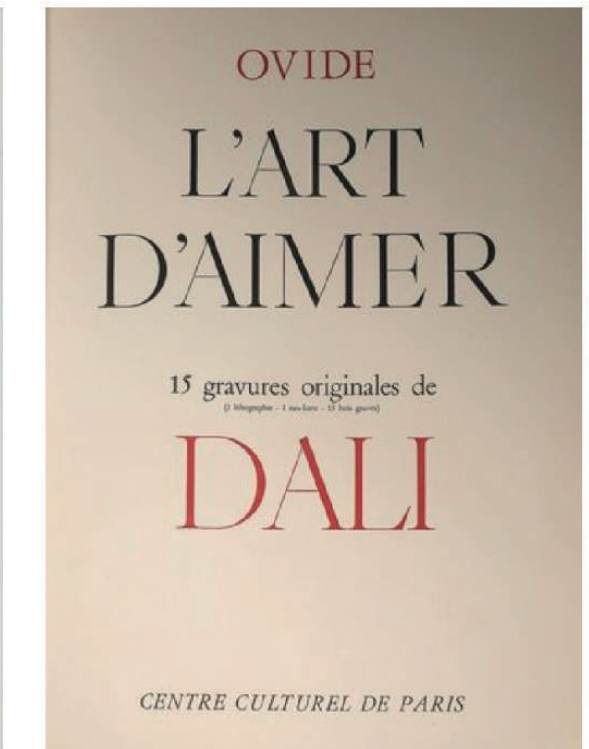
ILLUSTRATED BOOKS  
FAUST



ILLUSTRATED BOOKS  
HAMLET



ILLUSTRATED BOOKS  
IMAGINATIONS AND OBJECTS OF THE  
FUTURE

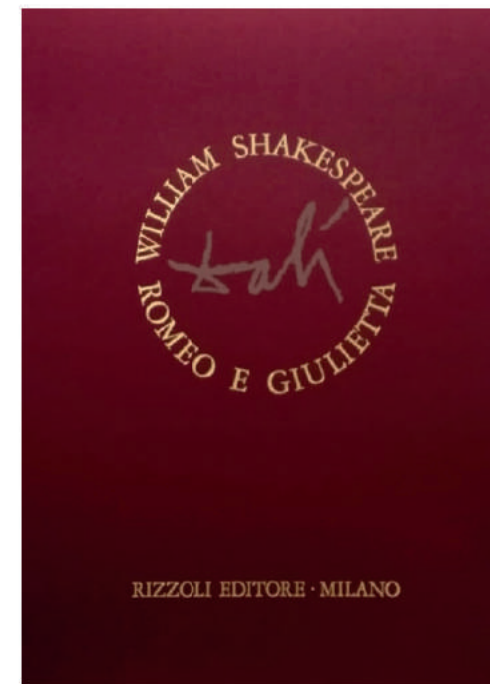


ILLUSTRATED BOOKS  
L'ART D'AIMER

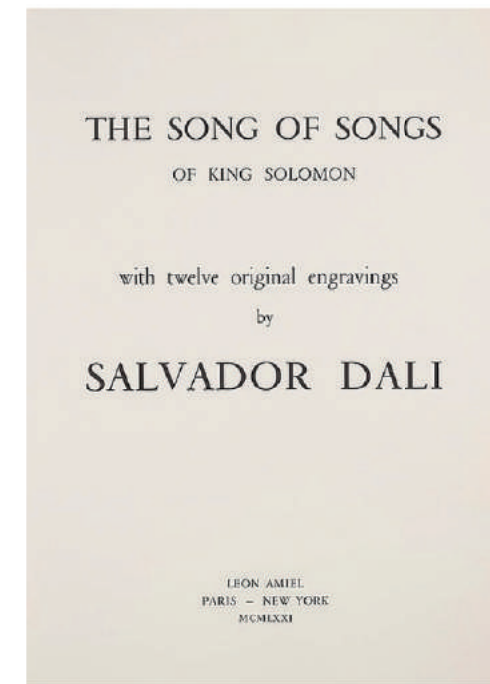




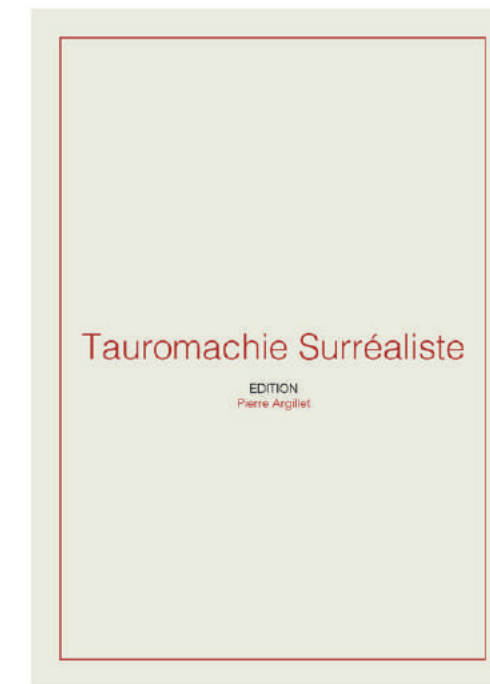
ILLUSTRATED BOOKS  
ROI, JE T'ATTENDS À BABYLONE



ILLUSTRATED BOOKS  
ROMEO AND JULIET



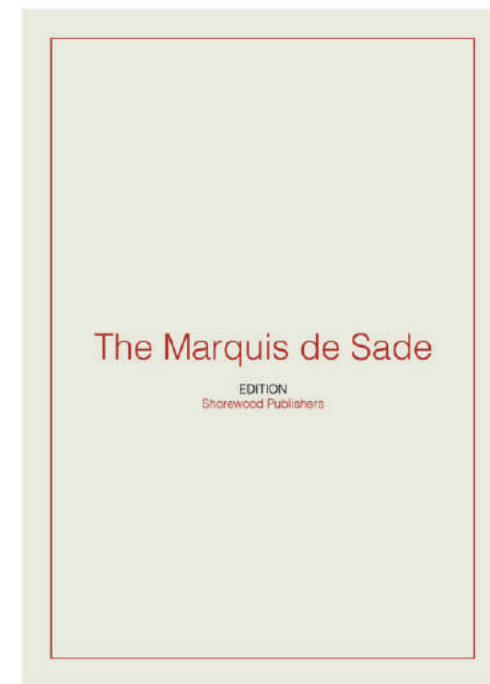
ILLUSTRATED BOOKS  
SONG OF SONGS OF SOLOMON



ILLUSTRATED BOOKS  
TAUROMACHIE SURREALISTE



ILLUSTRATED BOOKS  
THE BIBLE



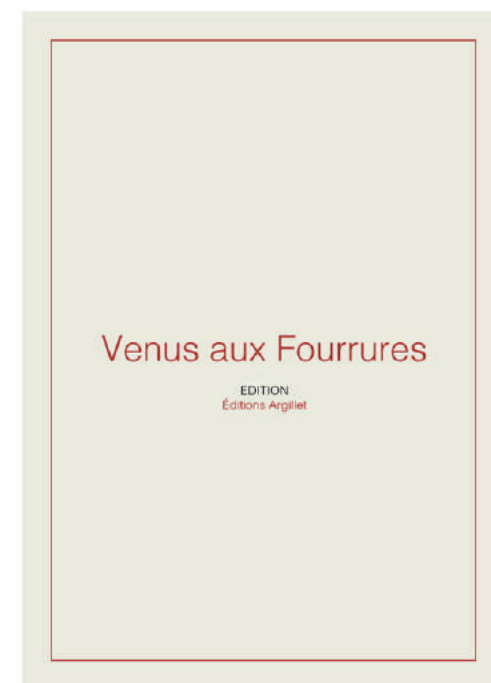
ILLUSTRATED BOOKS  
THE MARQUIS DE SADE



ILLUSTRATED BOOKS  
TRICORNE



ILLUSTRATED BOOKS  
TWELVE TRIBES OF ISRAEL



ILLUSTRATED BOOKS  
VENUS AUX FOURRURES





# UNIVERSAL TAROTS

These famous original artworks represent the universal Tarot and were created by Dalí in collage, watercolour and gouache before they were printed in actual card form.

Dalí worked diligently on each image to create an ethereal, surreal artwork that would invoke the famous personages of the Tarot, diviners of the past, present and future.

It was Gala, Dalí's wife and lifetime muse, who nurtured his interest in mysticism, and it was for her that this beautiful series was painted. Dalí's Tarot is the first reinterpretation of the major and minor Arcana since 1910, and the only set to have been painted by a great artist.

120  
anniversary





UNIVERSAL TAROT/COLLAGE  
AS DE ESPADAS



UNIVERSAL TAROT/COLLAGE  
AS DE OROS



UNIVERSAL TAROT/COLLAGE  
CABALLERO DE COPAS



UNIVERSAL TAROT/COLLAGE  
CINCO DE ESPADAS



UNIVERSAL TAROT/COLLAGE  
FOUR OF SWORDS



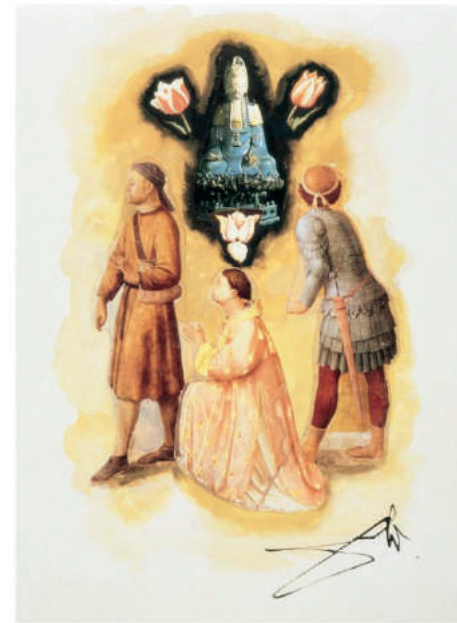
UNIVERSAL TAROT/COLLAGE  
KNIGHT OF SWORDS



UNIVERSAL TAROT/COLLAGE  
NINE OF COPES.



UNIVERSAL TAROT/COLLAGE  
NUEVE DE BASTOS



UNIVERSAL TAROT/COLLAGE  
CUATRO DE OROS



UNIVERSAL TAROT/COLLAGE  
DOS DE BASTOS



UNIVERSAL TAROT/COLLAGE  
EIGHT OF CLUBS



UNIVERSAL TAROT/COLLAGE  
EIGHT OF SWORDS



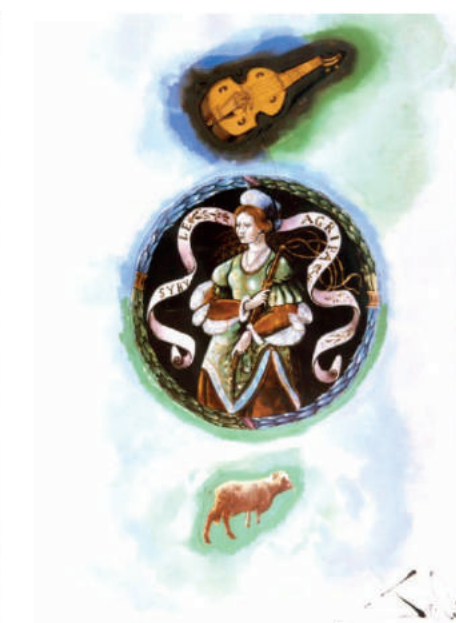
UNIVERSAL TAROT/COLLAGE  
NUEVE DE OROS



UNIVERSAL TAROT/COLLAGE  
SEIS DE ESPADAS



UNIVERSAL TAROT/COLLAGE  
SOTA DE BASTOS



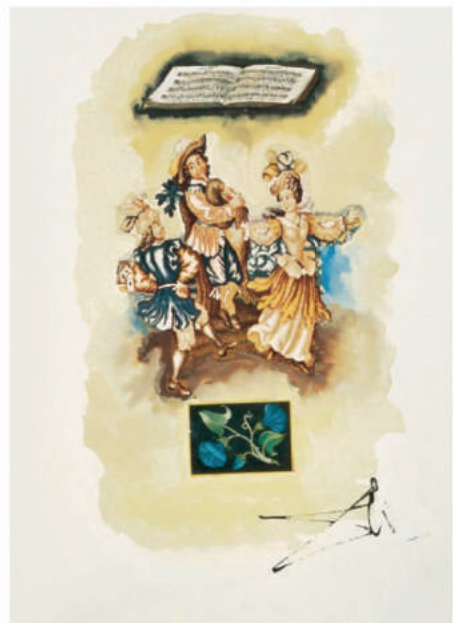
UNIVERSAL TAROT/COLLAGE  
SYBYLE AGRIPA



UNIVERSAL TAROT/COLLAGE  
EL LOCO



UNIVERSAL TAROT/COLLAGE  
FIVE OF CLUBS



UNIVERSAL TAROT/COLLAGE  
FOUR OF CLUBS



UNIVERSAL TAROT/COLLAGE  
FOUR OF CUPS



UNIVERSAL TAROT/COLLAGE  
TENS OF COPES



UNIVERSAL TAROT/COLLAGE  
TENS OF ORIES



UNIVERSAL TAROT/COLLAGE  
THE STRENGTH



UNIVERSAL TAROT/COLLAGE  
THE WHEEL OF FORTUNE





UNIVERSAL TAROT/COLLAGE  
THREE OF COPES



UNIVERSAL TAROT/COLLAGE  
WOMAN WITH GUITAR



UNIVERSAL TAROT/COLLAGE  
YELLOW NAPOLEON WITH BALLERINA



UNIVERSAL TAROT/COLLAGE  
YOU ARE OF ORIES





